

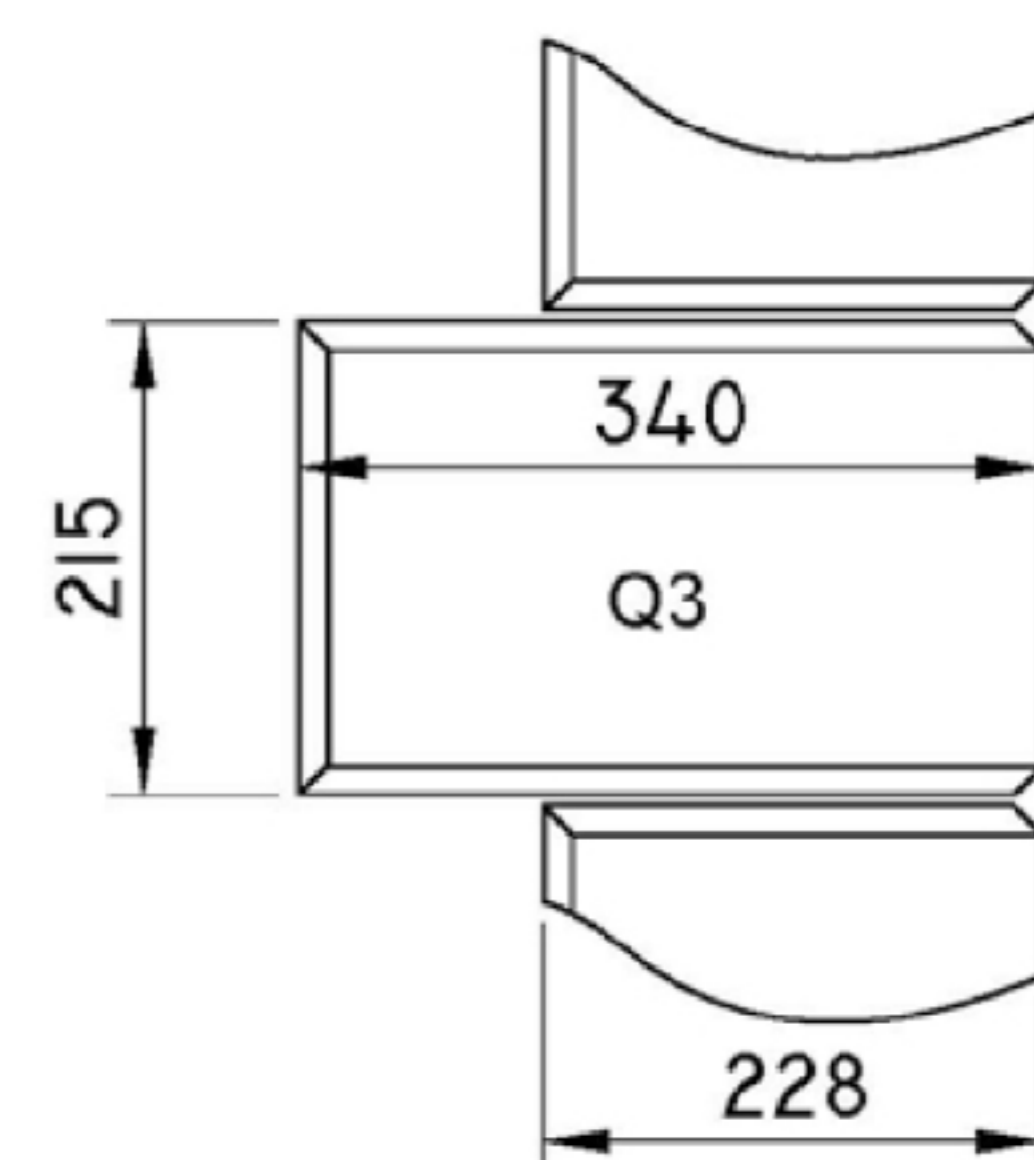
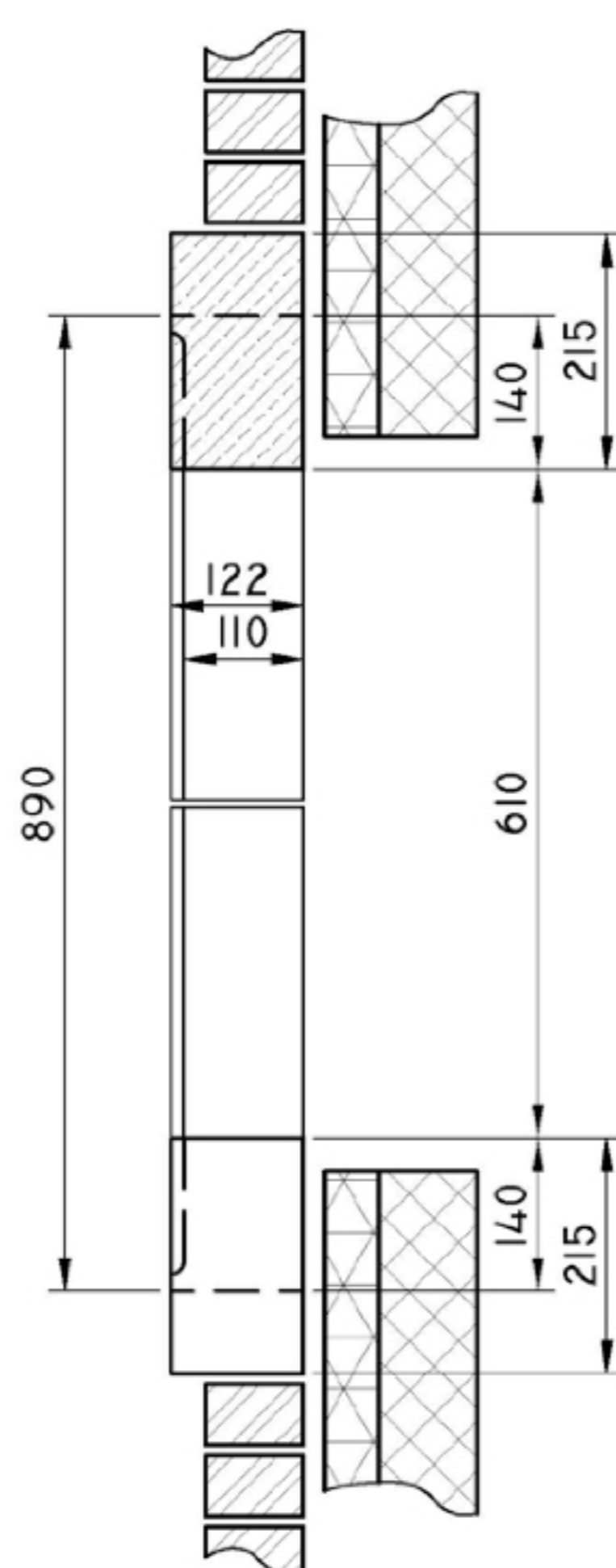
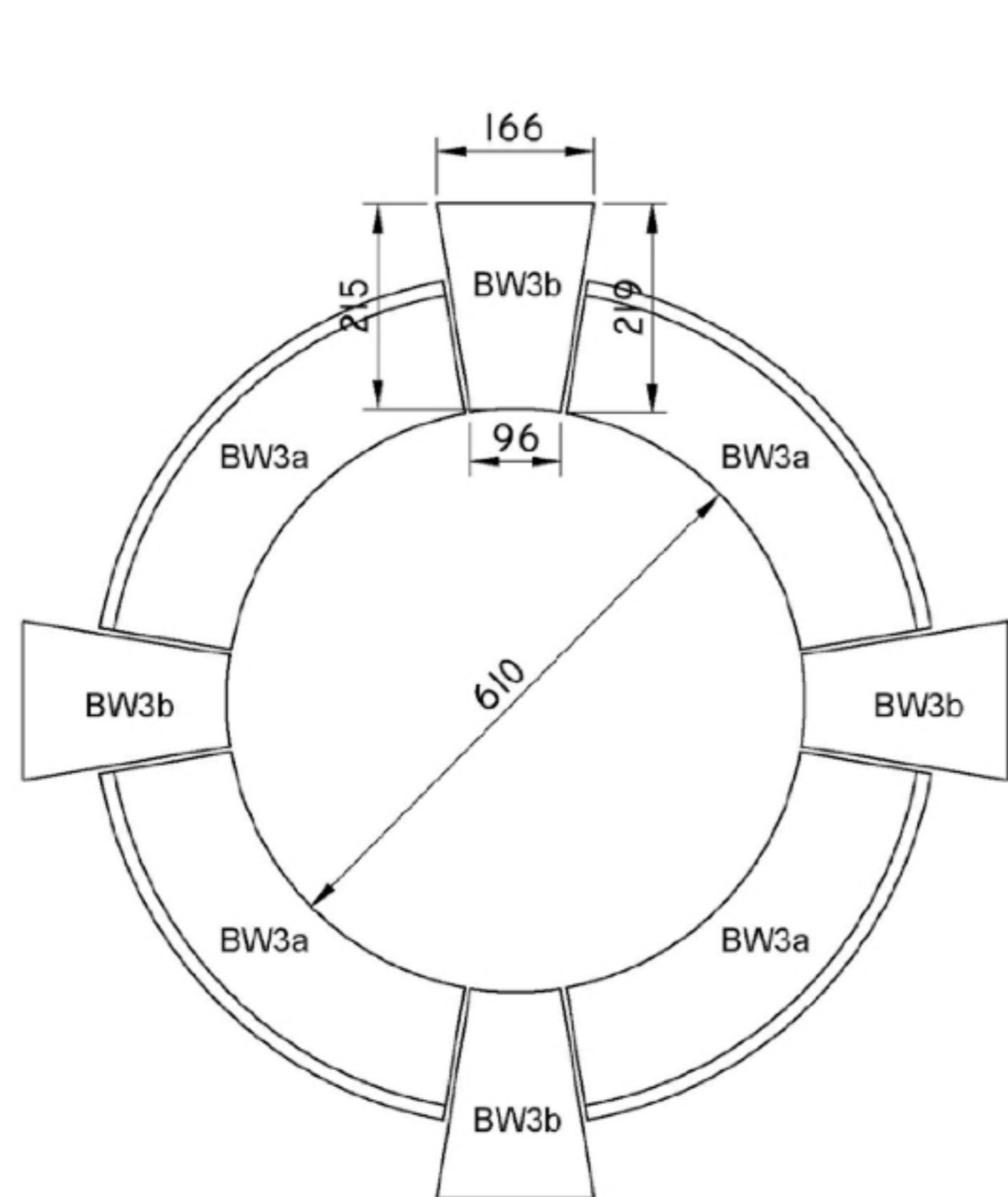
Philpots Quarry  
 Philpots Lane  
 West Hoathly  
 West Sussex  
 RH19 4PS

# LAMBS

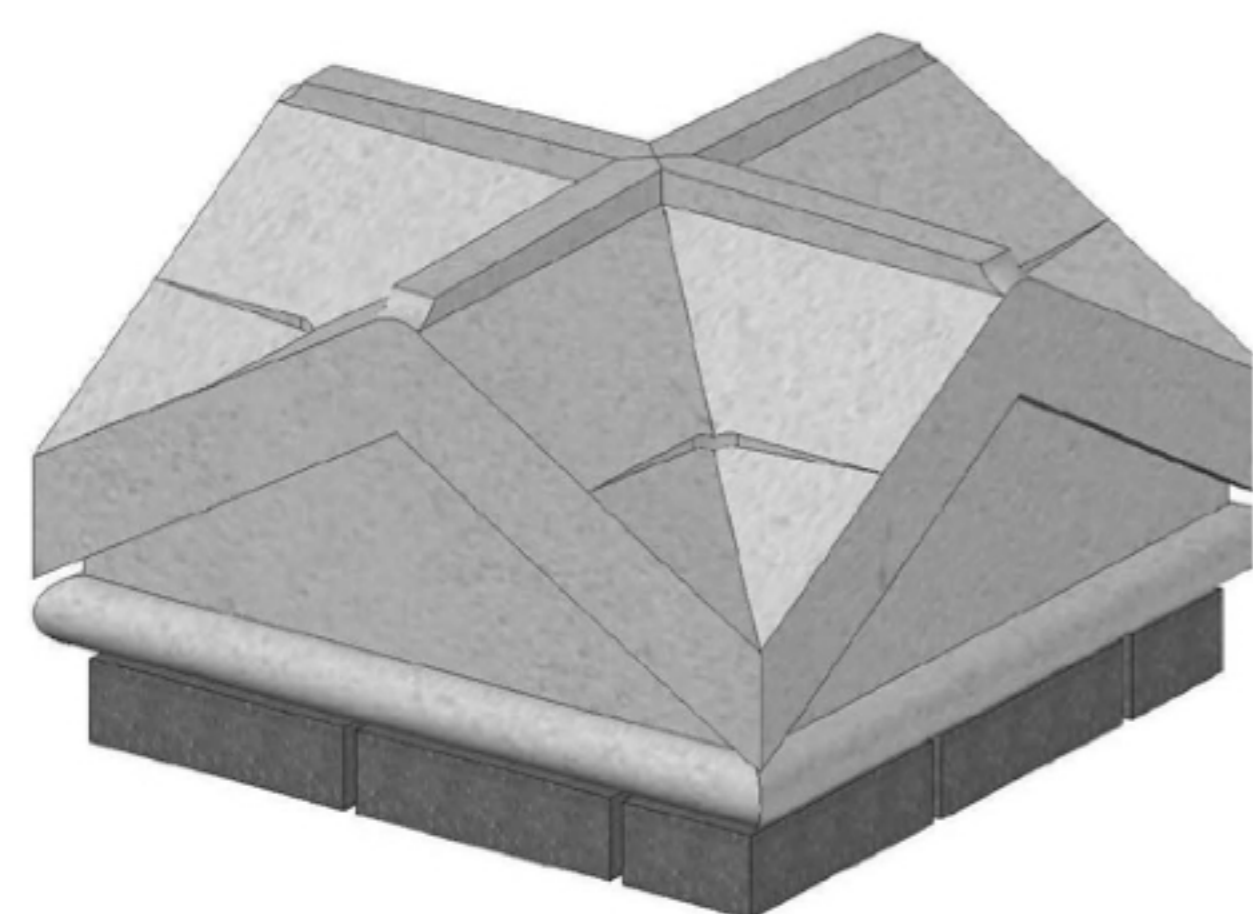
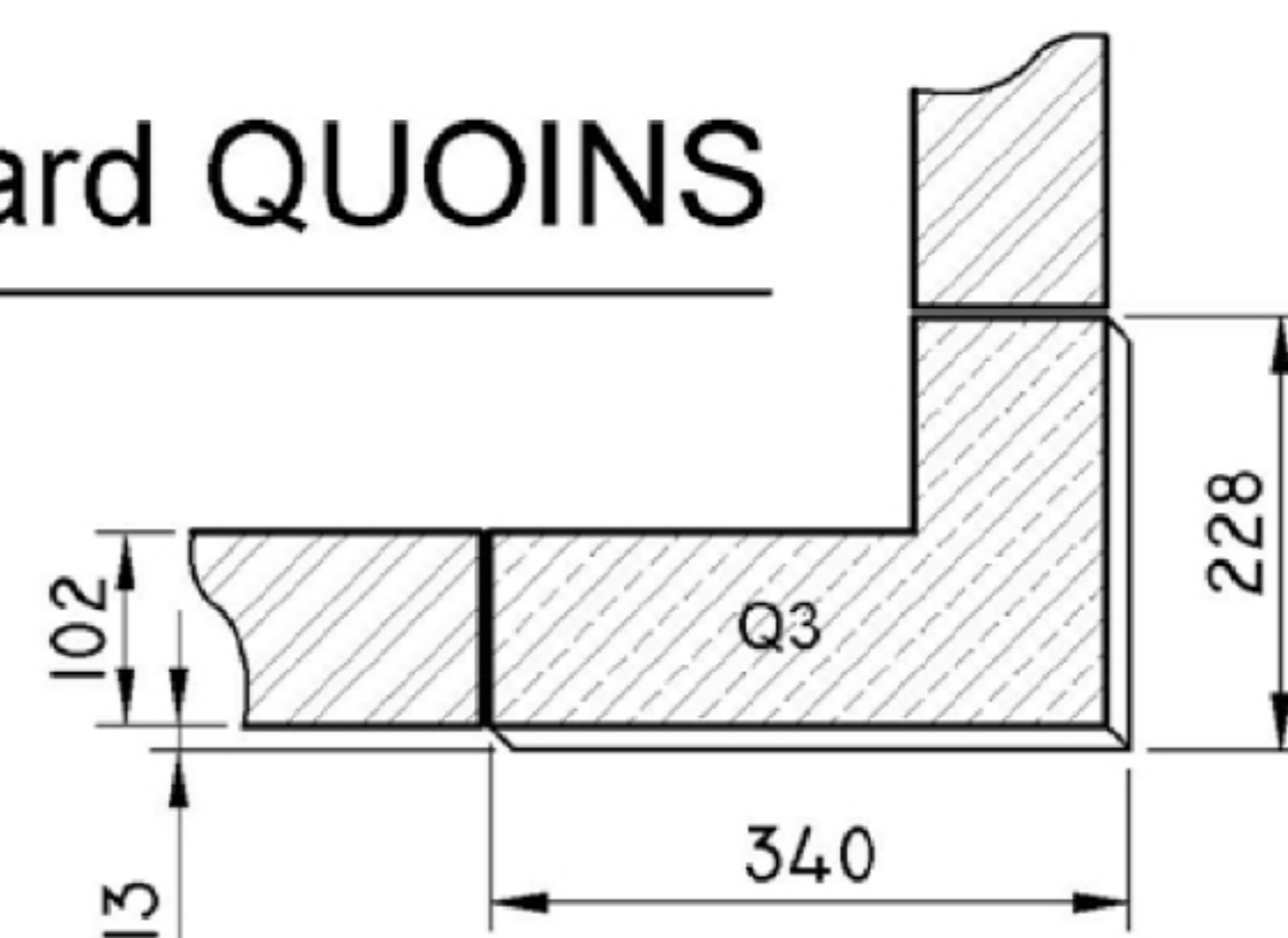


100 YEARS COMMITMENT  
 TO CRAFTSMANSHIP

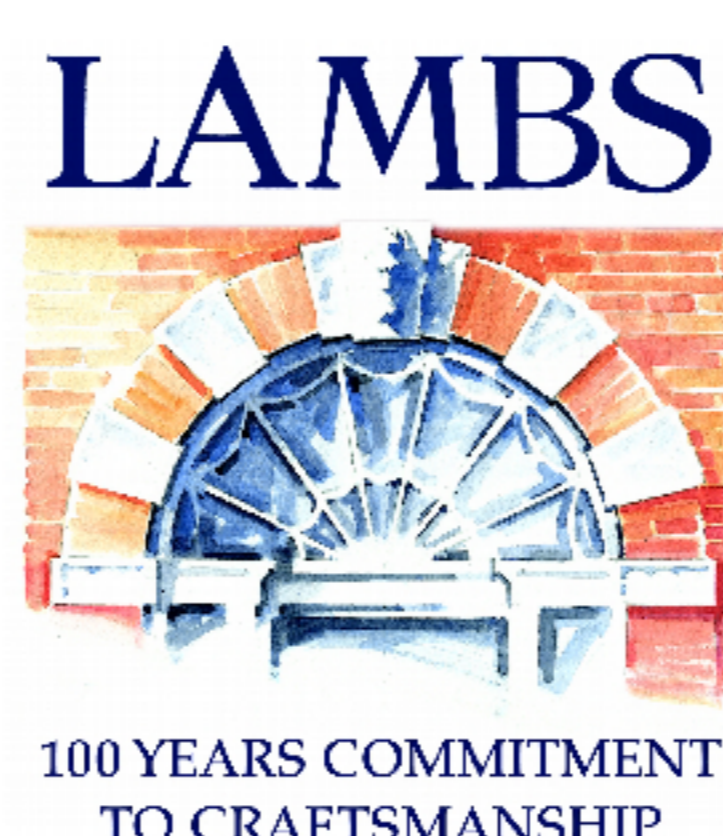
## NATURAL STONE STANDARD PRODUCTS



Standard QUOINS



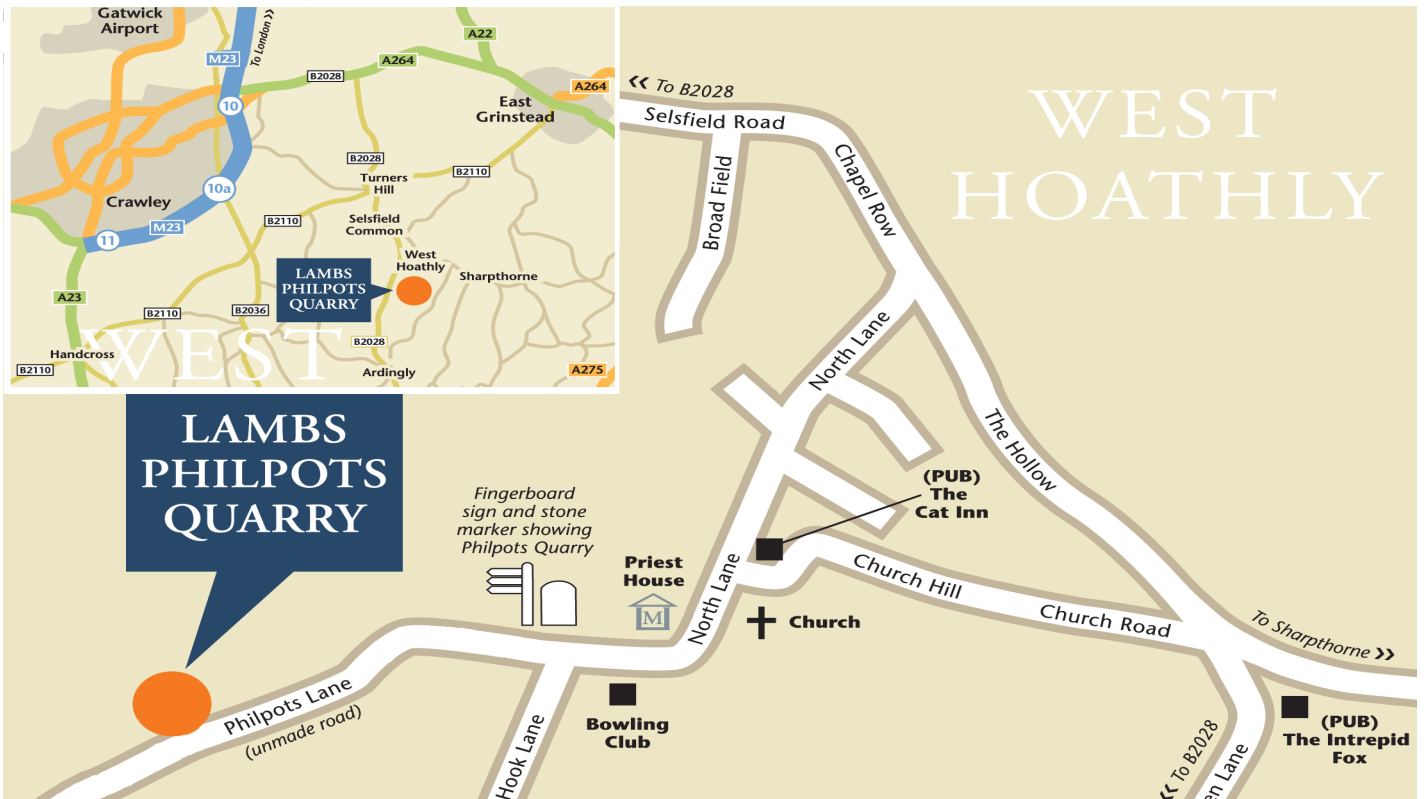
Port Limestone  
 Port Regent Limestone  
 Wealden Sussex Sandstone



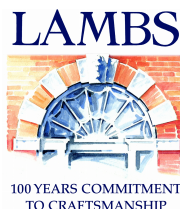
[www.lambstone.com](http://www.lambstone.com)

01342 811311

Contents			
Window Heads	3	Pier Caps Saddleback	21
Window Cills	3	Pier Caps stepped flat top	22
Keystones	4	Pier Caps saddleback & cupola	23
Window Surrounds Flat Head	5	Pier Caps Saddleback	24
Window Surrounds Triangular Pediment	6	Pier Caps Saddleback	25
Window Surrounds Segmental Pediment	7	Pier Caps Saddleback	26
Window Surrounds 3D	8	Pier Caps Saddleback	27
Window Bull's Eye plain 4 piece	9	Pier Caps Saddleback	28
Window Bull's Eye with keystone	10	Pier Caps fourway	29
Window Bull's Eye with quadrant keys	11	Copings 140 - 248 mm (base)	30
Plinth courses	12	Copings 248 - 394 mm	31
Plinth courses	13	Copings 231 - 495 mm	32
Hood Mould	14	Copings 127 - 425 mm	33
Gable Vent	14	Copings once weathered 290 - 381	34
Quoins Chamfered	15	Copings saddleback 280 - 312	35
Quoins Chamfered and plain	16	Copings saddleback 270 - 394	36
Pier With Sphere	17	Copings saddleback 290 - 410	37
Pier Caps flat top	18	Copings flat top 178 - 356	38
Pier Caps flat top & saddleback	19	Copings simple 292 - 368	39
Pier Caps saddleback	20	Copings once weathered 301 - 465	40



**Port Limestone**  
**Port Regent Limestone**  
**Wealden Sussex Sandstone**



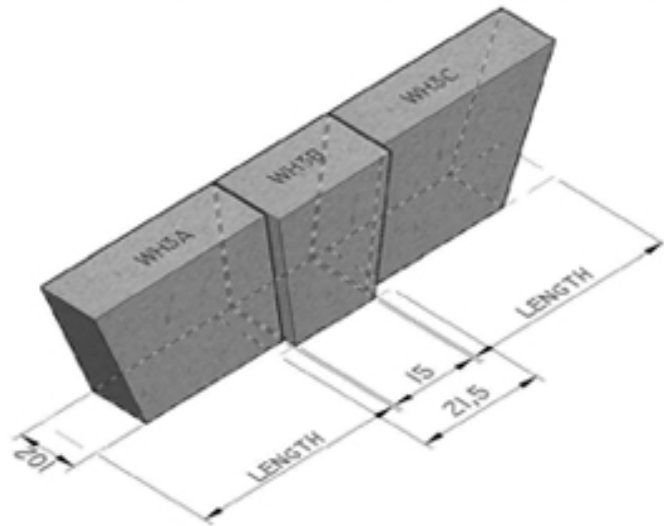
[www.lambsstone.com](http://www.lambsstone.com)

01342 811311

# Standard WINDOW HEADS

WH3Aa	- 250 x 102 x 215 mm
WH3Ab	- 362,5 x 102 x 215 mm
WH3Ac	- 475 x 102 x 215 mm
WH3Ad	- 587,5 x 102 x 215 mm
WH3Ae	- 644 x 102 x 215 mm
WH3Af	- 700 x 102 x 215 mm
WH3Ag	- 812,5 x 102 x 215 mm
WH3Ah	- 925 x 102 x 215 mm
WH3B	- 215 x 122 x 215 mm

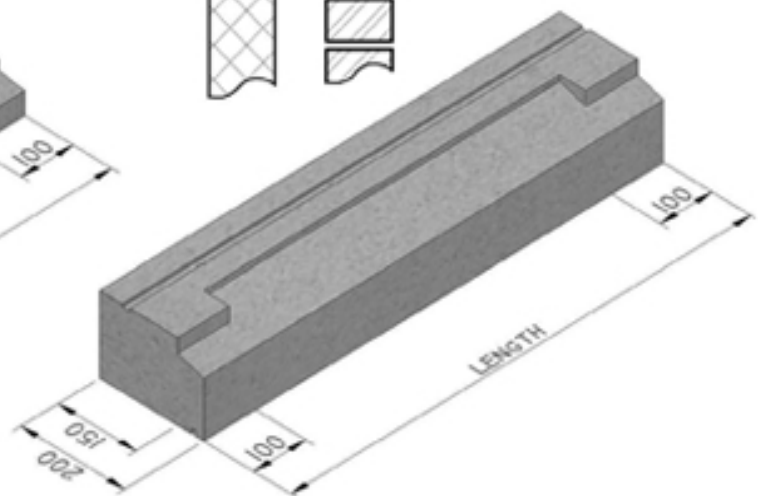
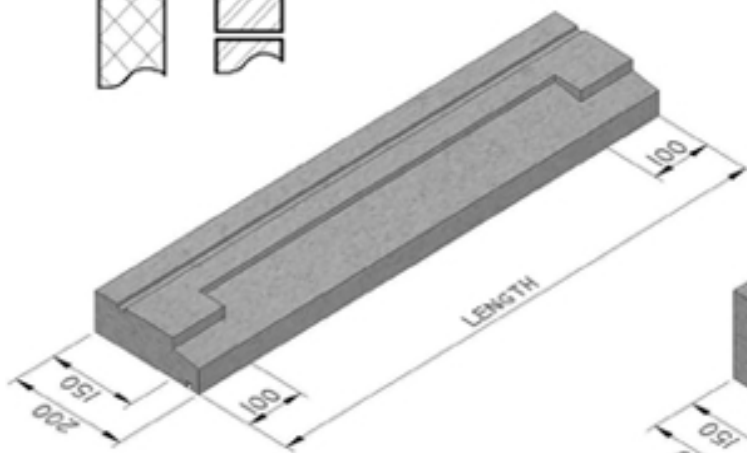
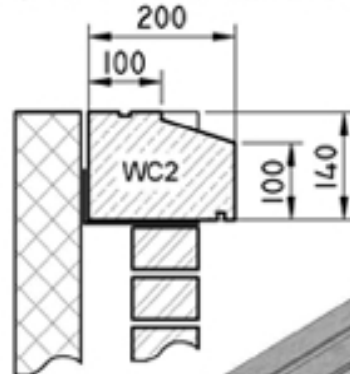
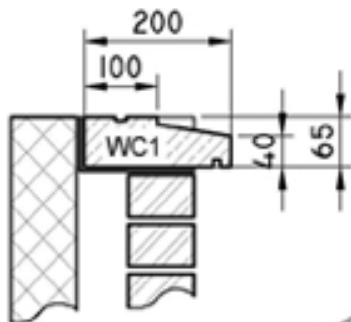
WH3Ca	- 250 x 102 x 215 mm
WH3Cb	- 362,5 x 102 x 215 mm
WH3Cc	- 475 x 102 x 215 mm
WH3Cd	- 587,5 x 102 x 215 mm
WH3Ce	- 644 x 102 x 215 mm
WH3Cf	- 700 x 102 x 215 mm
WH3Cg	- 812,5 x 102 x 215 mm
WH3Ch	- 925 x 102 x 215 mm



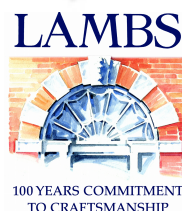
# Standard WINDOW CILLS

WC1a-	660 x 200 x 65 mm
WC1b-	885 x 200 x 65 mm

WC2a-	660 x 200 x 140 mm
WC2b-	885 x 200 x 140 mm



Port Limestone  
 Port Regent Limestone  
 Wealden Sussex Sandstone

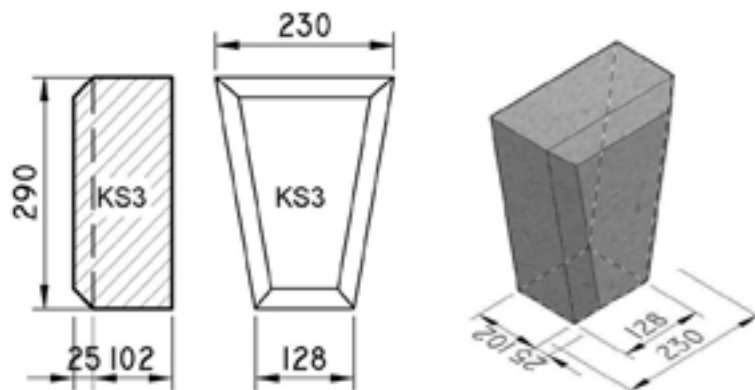
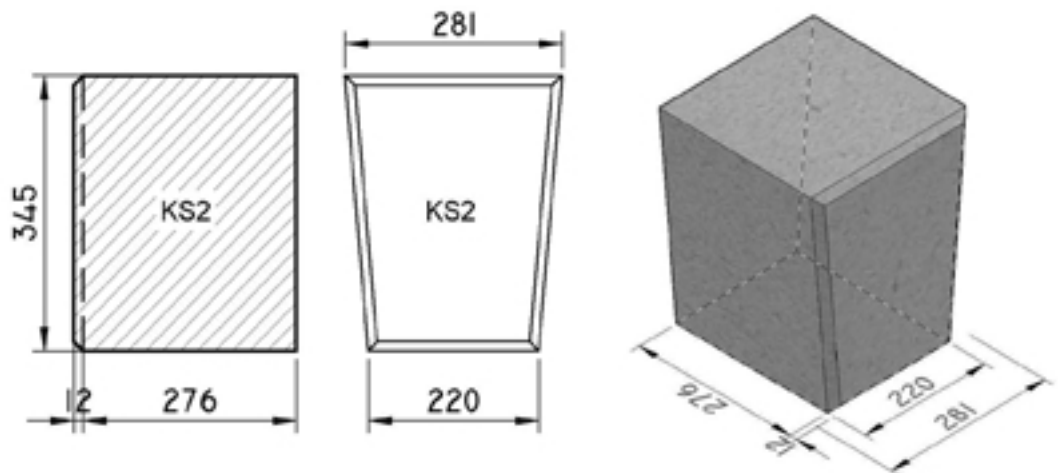
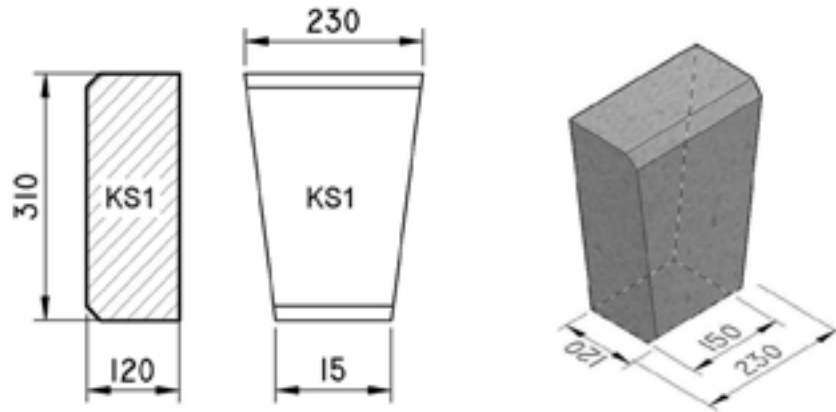


[www.lambstone.com](http://www.lambstone.com)

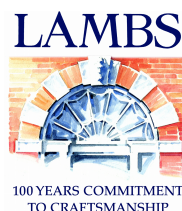
01342 811311

# Standard KEYSTONES

- KS1 - 230 x 120 x 310 mm
- KS2 - 281 x 288 x 345 mm
- KS3 - 230 x 127 x 290 mm



Port Limestone  
Port Regent Limestone  
Wealden Sussex Sandstone

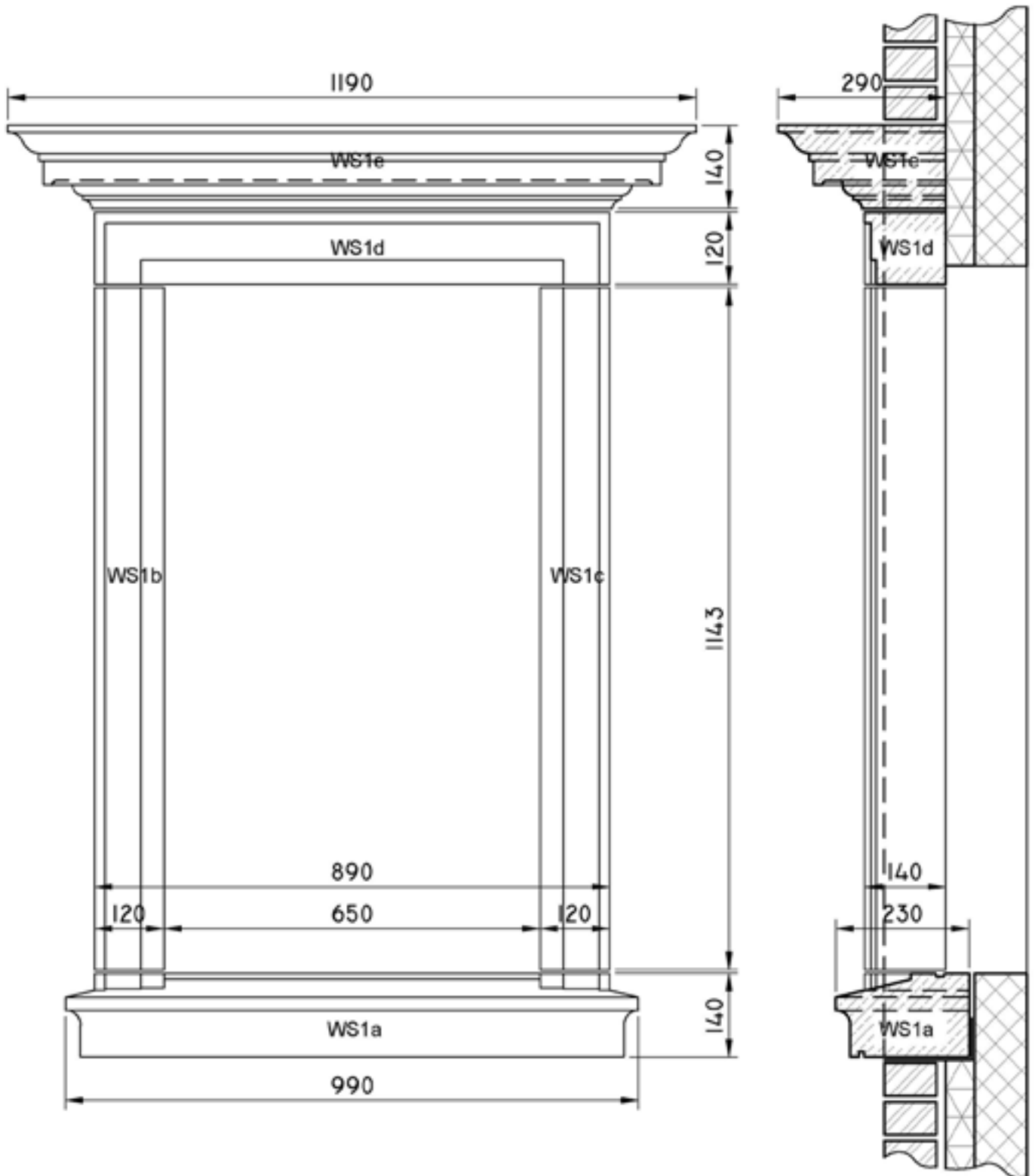


[www.lamsstone.com](http://www.lamsstone.com)

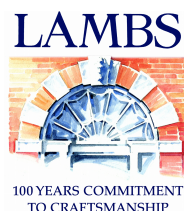
01342 811311

# Standard WINDOW SURROUNDS

- WS1a- 990 x 230 x 140 mm
- WS1b- 120 x 140 x 1143 mm
- WS1c- 120 x 140 x 1143 mm
- WS1d- 890 x 140 x 120 mm
- WS1e- 1190 x 290 x 140mm



**Port Limestone**  
**Port Regent Limestone**  
**Wealden Sussex Sandstone**



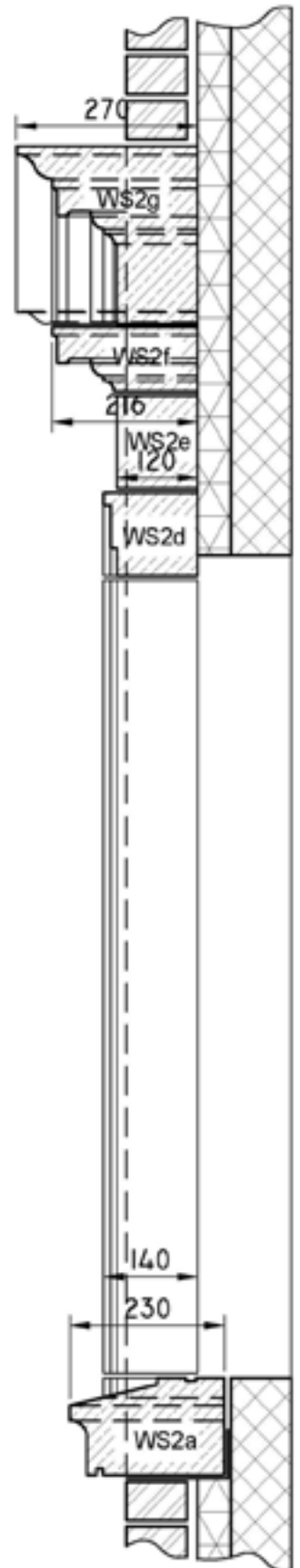
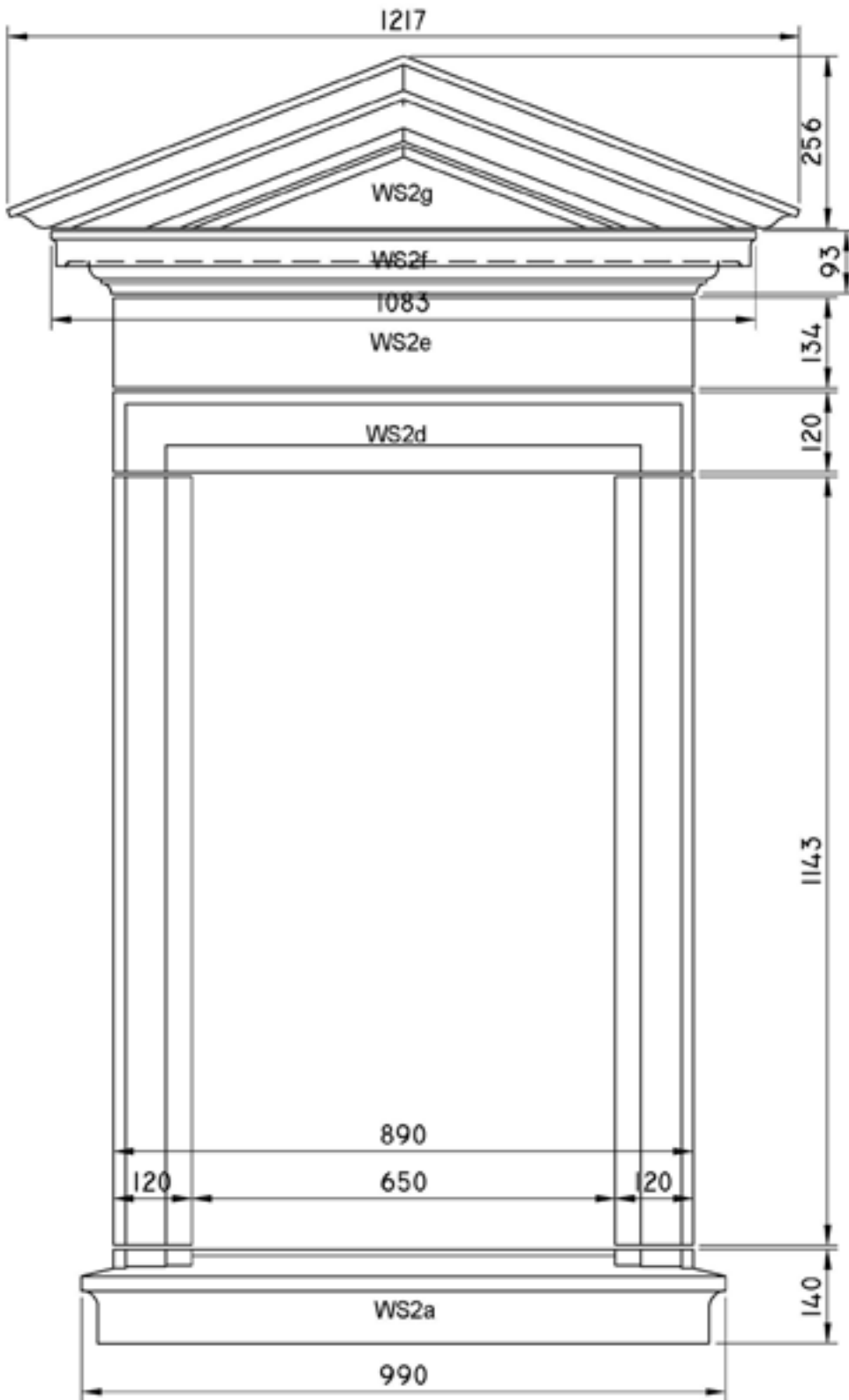
[www.lamsstone.com](http://www.lamsstone.com)

01342 811311

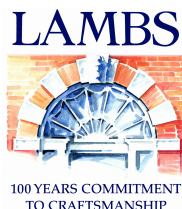
# Standard WINDOW SURROUNDS

WS2a - 990 x 230 x 140 mm  
 WS2b - 120 x 140 x 1143 mm  
 WS2c - 120 x 140 x 114 mm  
 WS2d - 890 x 140 x 120 mm

WS2e - 890 x 120 x 134mm  
 WS2f - 1083 x 216 x 93 mm  
 WS2g - 1217 x 270 x 256 mm



**Port Limestone**  
**Port Regent Limestone**  
**Wealden Sussex Sandstone**



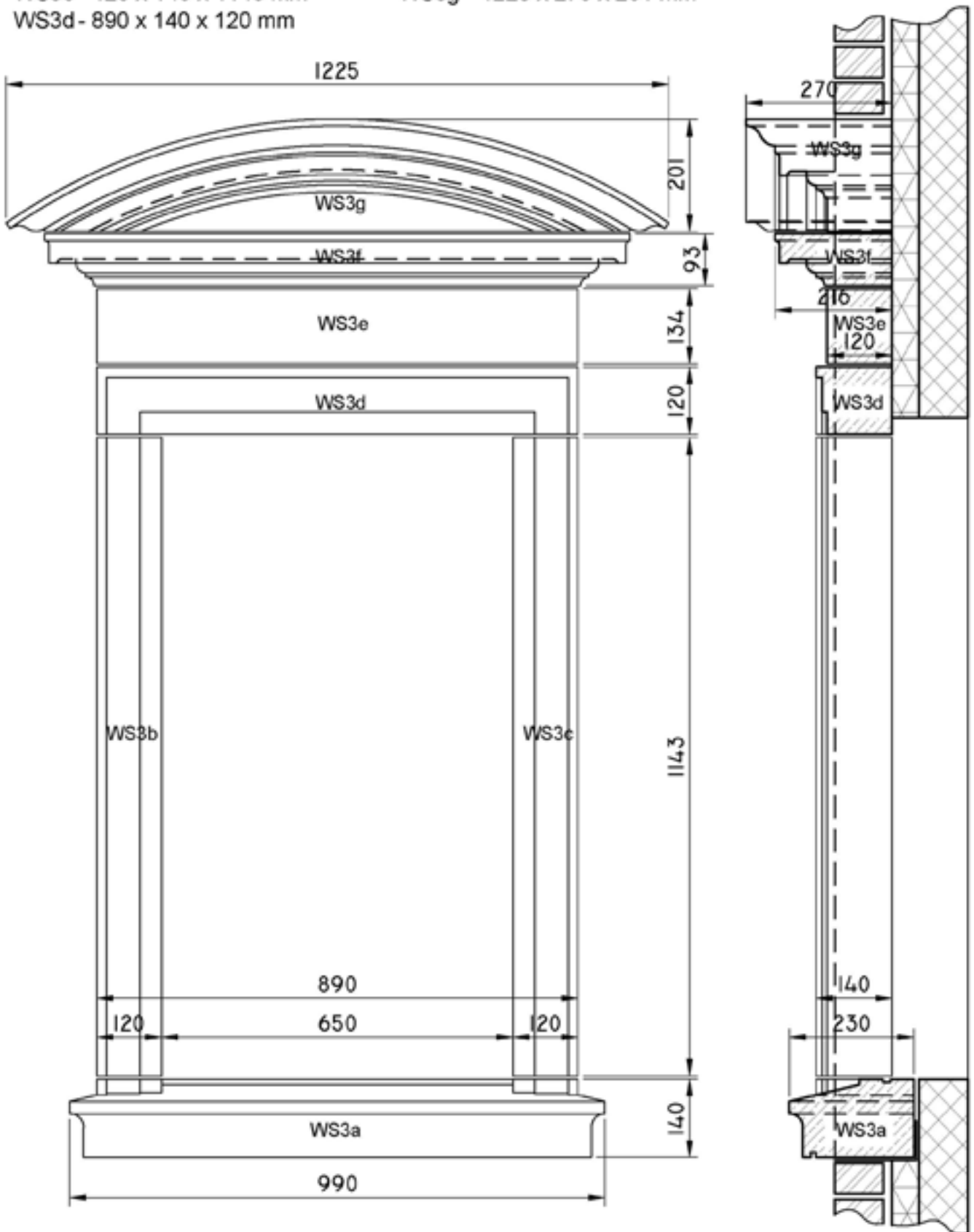
[www.lambstone.com](http://www.lambstone.com)

01342 811311

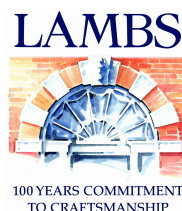
# Standard WINDOW SURROUNDS

WS3a - 990 x 230 x 140 mm  
 WS3b - 120 x 140 x 1143 mm  
 WS3c - 120 x 140 x 1143 mm  
 WS3d - 890 x 140 x 120 mm

WS3e - 890 x 120 x 134mm  
 WS3f - 1083 x 216 x93 mm  
 WS3g - 1225 x 270 x 201 mm



**Port Limestone**  
**Port Regent Limestone**  
**Wealden Sussex Sandstone**



[www.lambstone.com](http://www.lambstone.com)

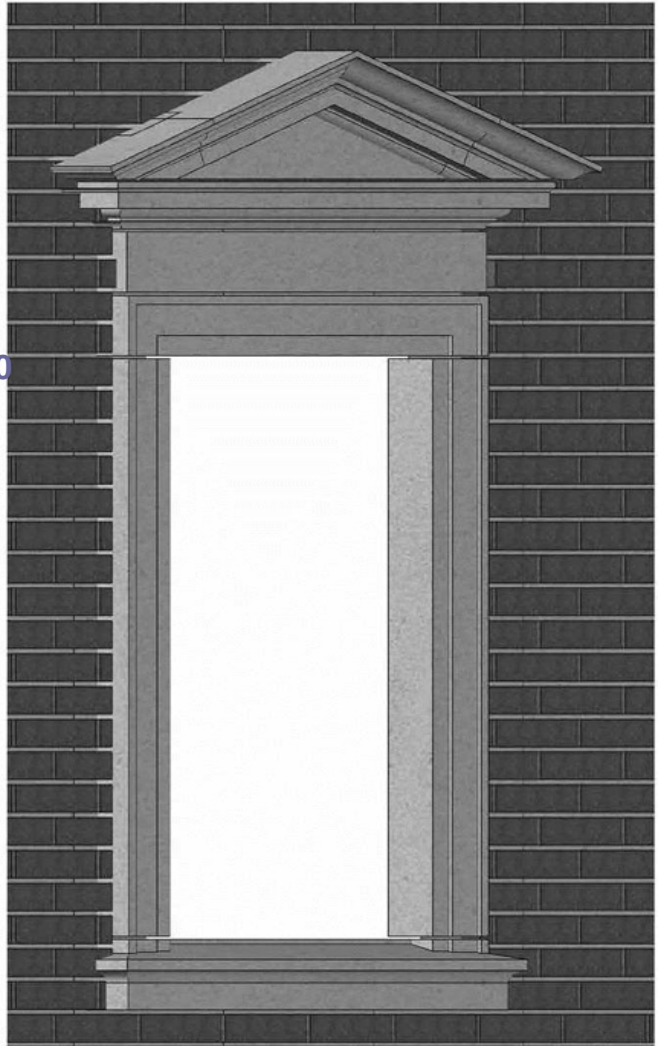
01342 811311 7



WS3a - 990 x 230 x 140 mm    WS3e - 890 x 120 x 134mm  
 WS3b - 120 x 140 x 1143 mm    WS3f - 1083 x 216 x 93 mm  
 WS3c - 120 x 140 x 1143 mm    WS3g - 1225 x 270 x 201 mm  
 WS3d - 890 x 140 x 120 mm

## Standard WINDOW SURROUNDS

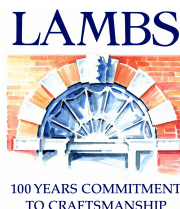
WS2a - 990 x 230 x 140 mm    WS2e - 890 x 120 x 134mm  
 WS2b - 120 x 140 x 1143 mm    WS2f - 1083 x 216 x 93 mm  
 WS2c - 120 x 140 x 114 mm    WS2g - 1217 x 270 x 256 mm  
 WS2d - 890 x 140 x 120 mm



WS1a - 990 x 230 x 140 mm  
 WS1b - 120 x 140 x 1143 mm  
 WS1c - 120 x 140 x 1143 mm  
 WS1d - 890 x 140 x 120 mm  
 WS1e - 1190 x 290 x 140mm



**Port Limestone**  
**Port Regent Limestone**  
**Wealden Sussex Sandstone**



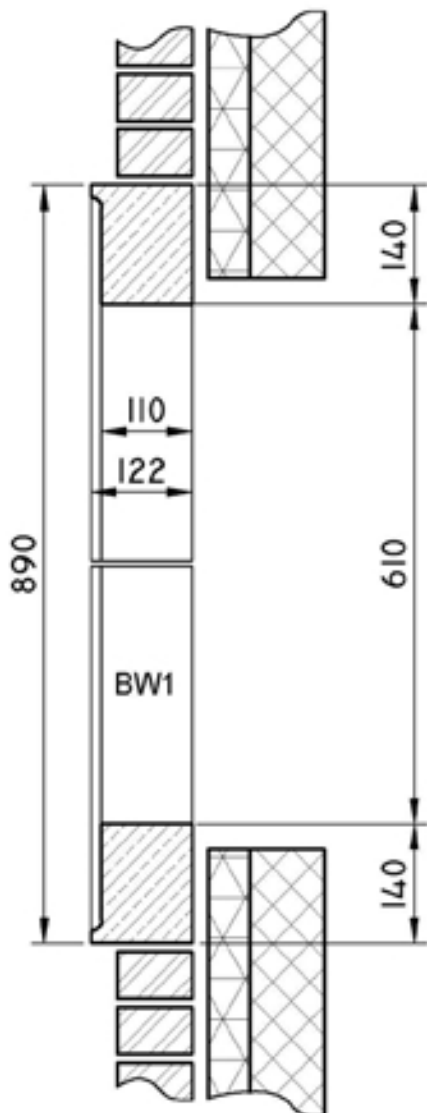
[www.lambstone.com](http://www.lambstone.com)

01342 811311

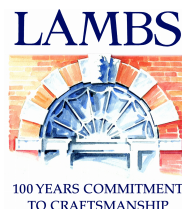


# Standard BULL'S-EYE WINDOW SURROUNDS

BW1 - 625 x 122 x 227 mm (4pcs)



**Port Limestone**  
**Port Regent Limestone**  
**Wealden Sussex Sandstone**



[www.lambstone.com](http://www.lambstone.com)

01342 811311

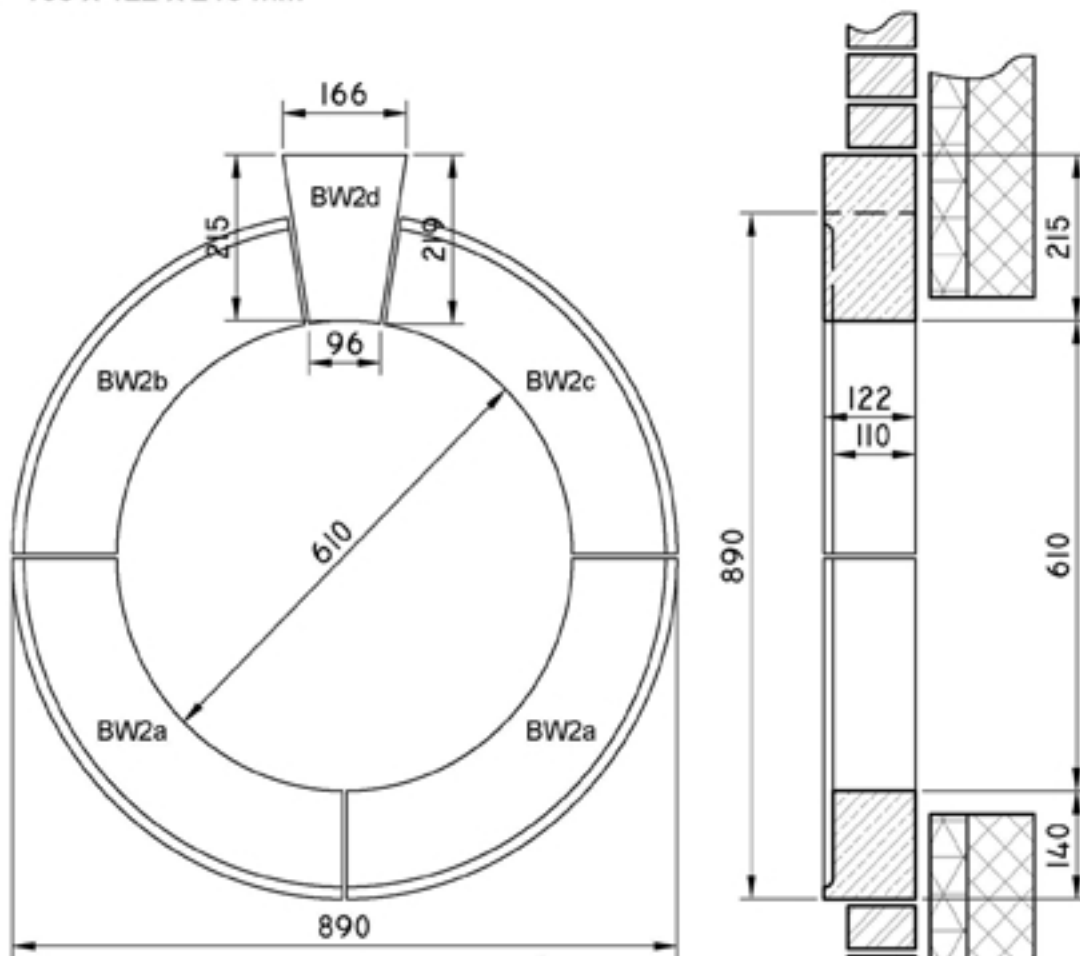
# Standard BULL'S-EYE WINDOW SURROUNDS

BW2a - 625 x 122 x 227 mm (2pcs)

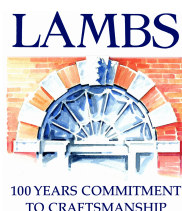
BW2b - 571 x 122 x 210 mm

BW2c - 571 x 122 x 210 mm

BW2d - 166 x 122 x 219 mm



**Port Limestone**  
**Port Regent Limestone**  
**Wealden Sussex Sandstone**



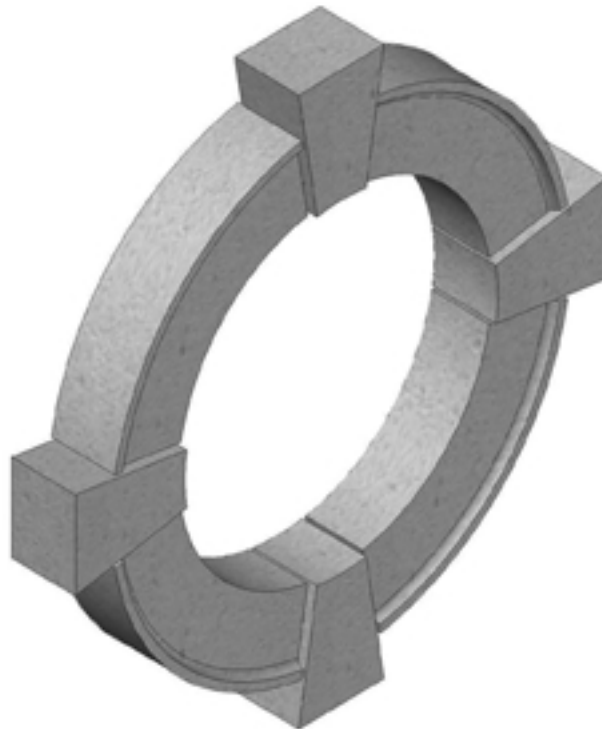
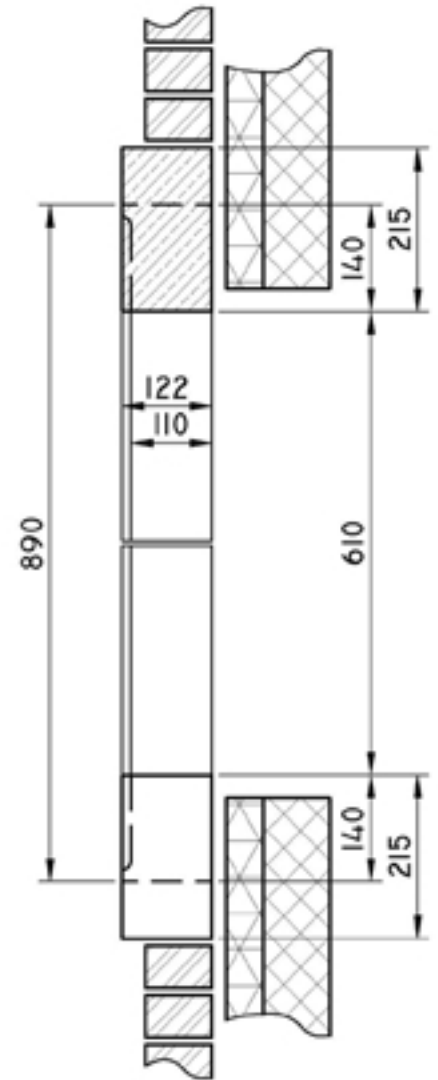
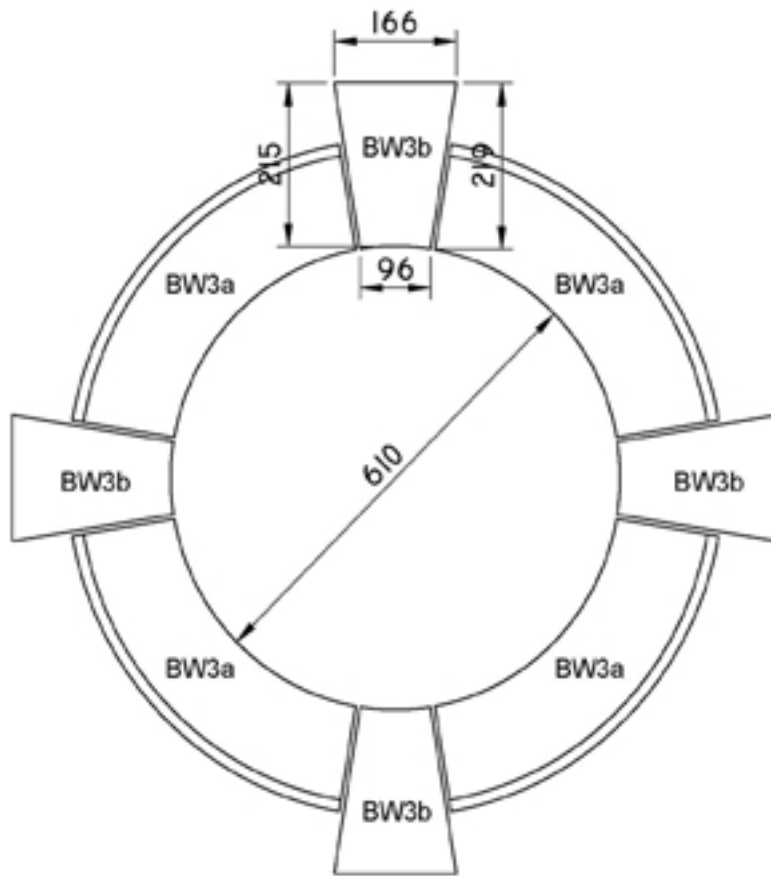
[www.lambstone.com](http://www.lambstone.com)

01342 811311

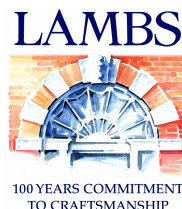
# Standard BULL'S-EYE WINDOW SURROUNDS

BW3a - 625 x 122 x 227 mm (4pcs)

BW3b - 166 x 122 x 210 mm (4pcs)



**Port Limestone**  
**Port Regent Limestone**  
**Wealden Sussex Sandstone**



[www.lambstone.com](http://www.lambstone.com)

**01342 811311**

**11**

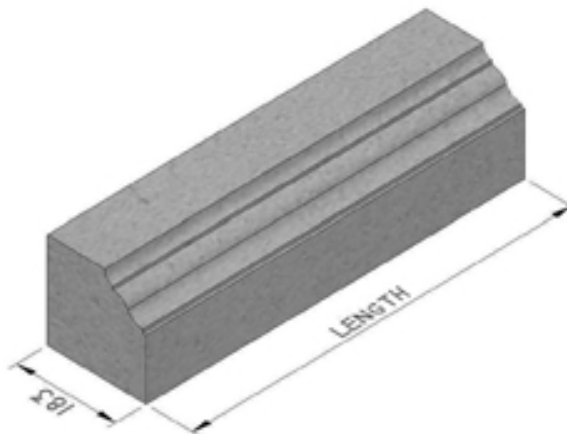
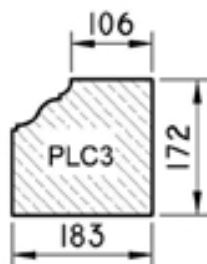
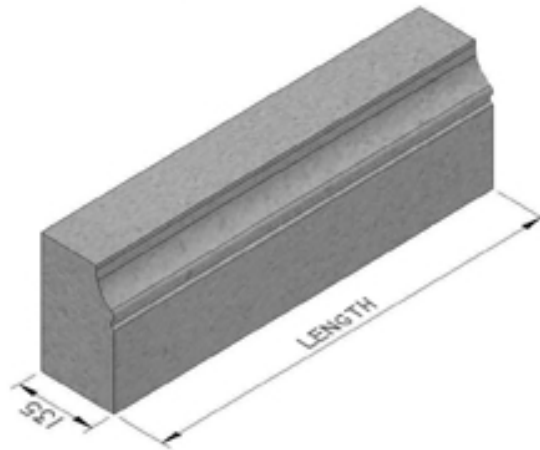
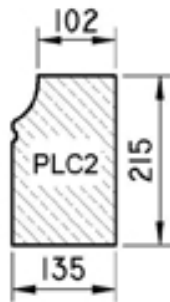
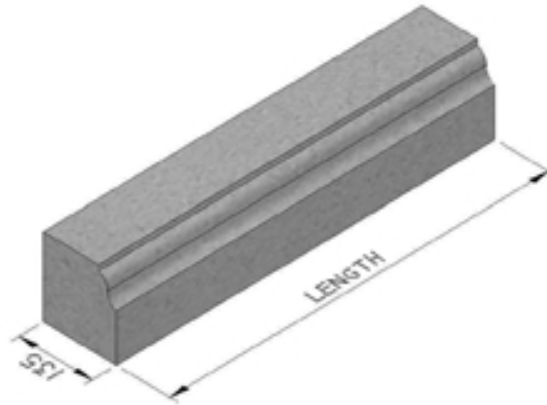
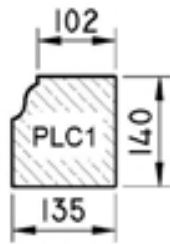
# Standard PLINTH COURSES

## Sections

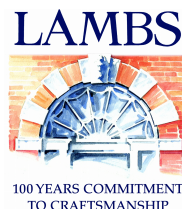
PLC1 - 135 x 140 mm

PLC2 - 135 x 215 mm

PLC3 - 183 x 172 mm



**Port Limestone**  
**Port Regent Limestone**  
**Wealden Sussex Sandstone**



[www.lamsstone.com](http://www.lamsstone.com)

01342 811311

12

# Standard PLINTH COURSES

## Sections

PLC8 - 220 x 100 mm

PLC9 - 127 x 215 mm

PLC10- 150 x 65 mm

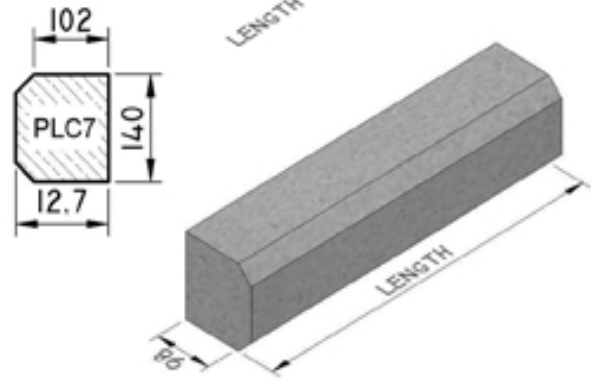
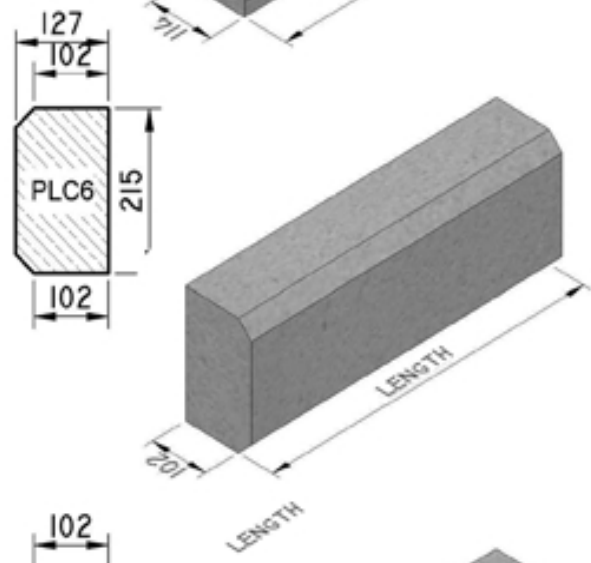
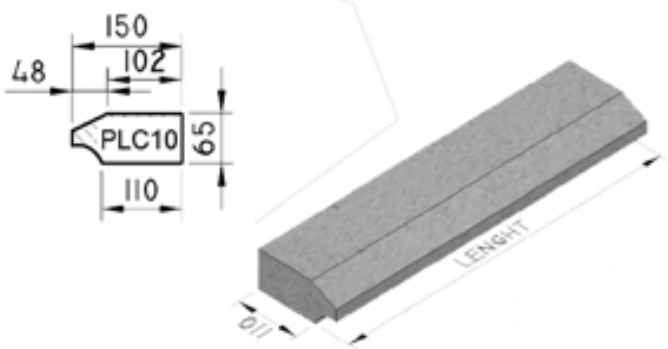
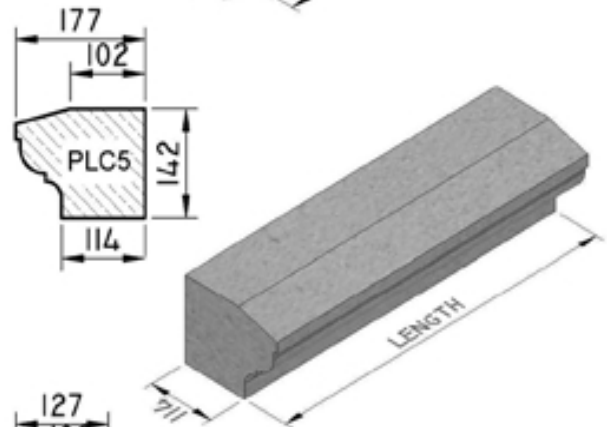
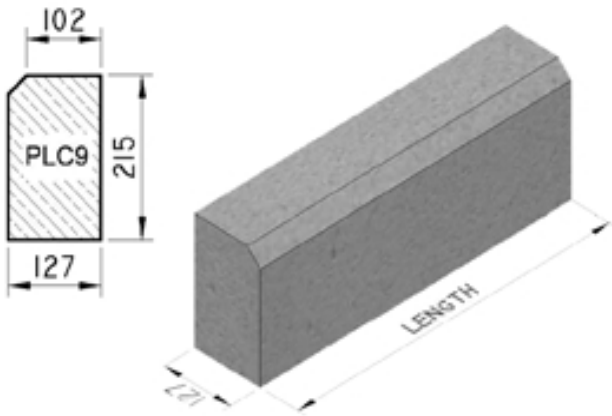
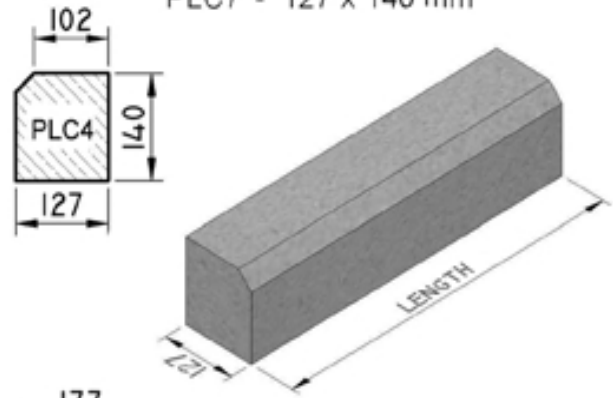
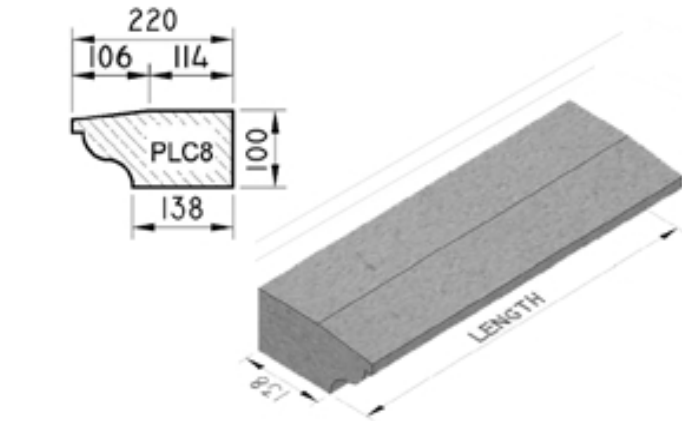
## Sections

PLC4 - 127 x 140 mm

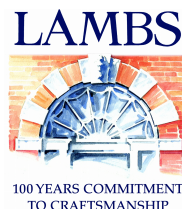
PLC5 - 177 x 142 mm

PLC6 - 127 x 215 mm

PLC7 - 127 x 140 mm



**Port Limestone**  
**Port Regent Limestone**  
**Wealden Sussex Sandstone**

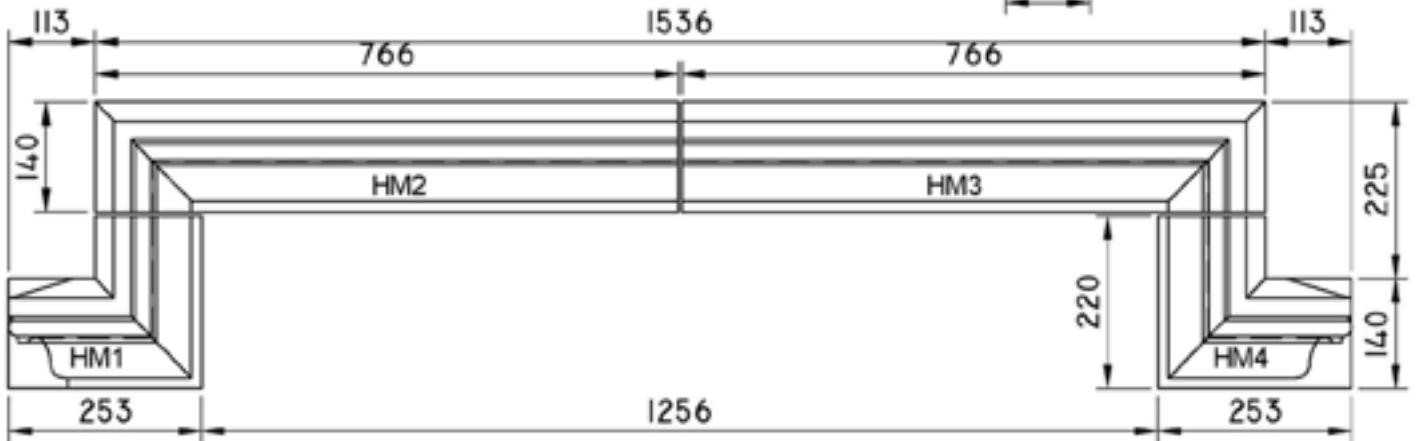
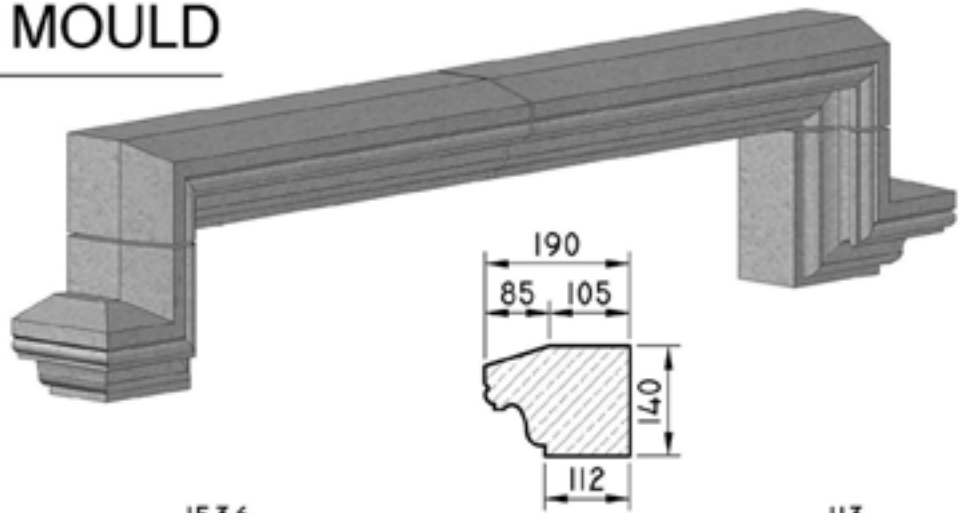


[www.lambstone.com](http://www.lambstone.com)

01342 811311

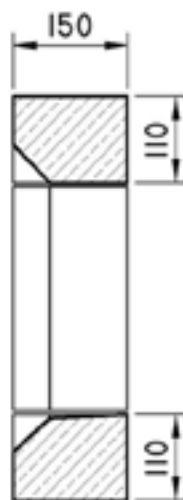
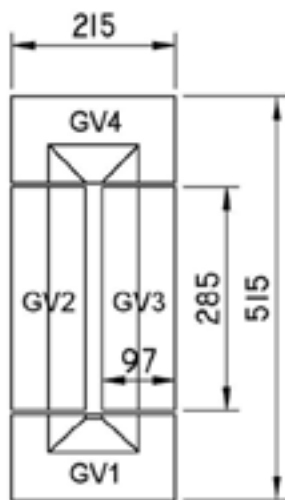
# Standard HOOD MOULD

- HM1 - 253 x 190 x 220 mm
- HM2 - 766 x 190 x 140 mm
- HM3 - 766 x 190 x 140 mm
- HM4 - 253 x 190 x 220 mm

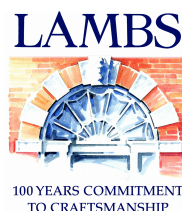


# Standard GABLE VENT

- GV1 - 215 x 150 x 110 mm
- GV2 - 97 x 150 x 285 mm
- GV3 - 97 x 150 x 285 mm
- GV4 - 215 x 150 x 110 mm



Port Limestone  
 Port Regent Limestone  
 Wealden Sussex Sandstone

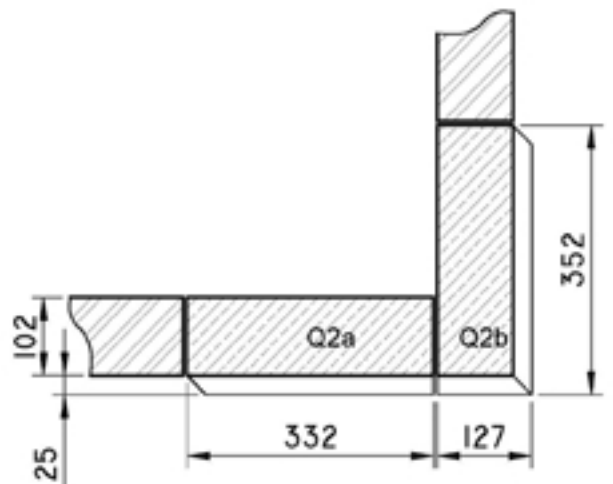
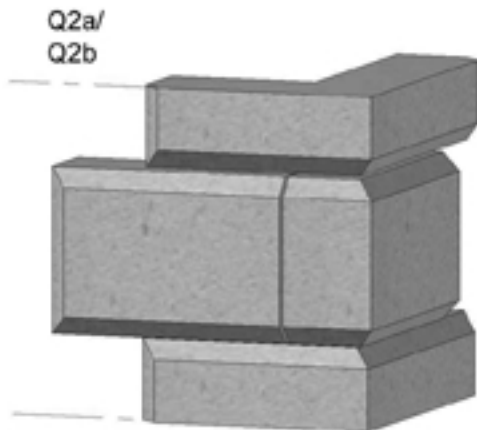
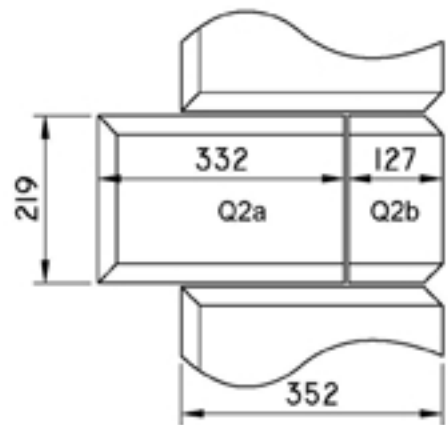
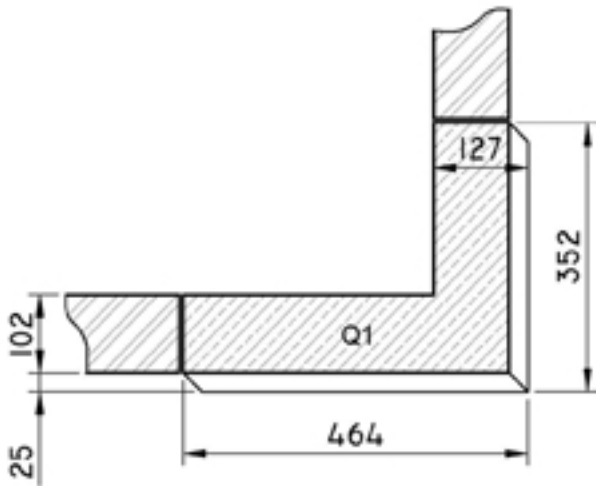
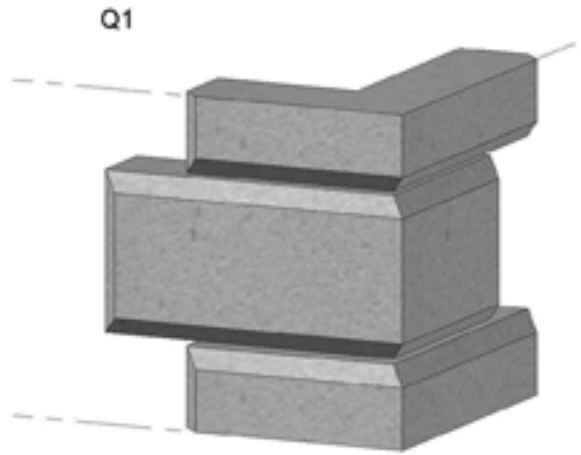
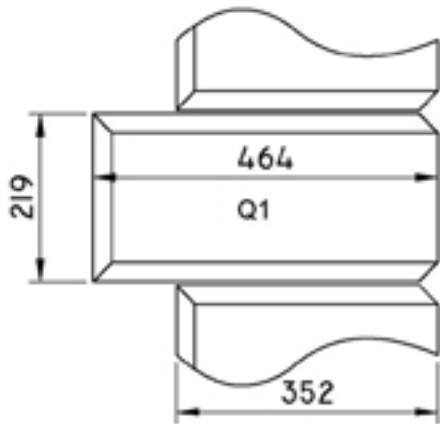


[www.lambstone.com](http://www.lambstone.com)

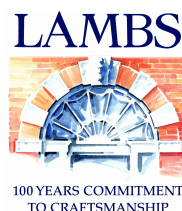
01342 811311

# Standard QUOINS

- Q1 - 464 x 352 x 219 mm
- Q2a - 332 x 127 x 219 mm
- Q2b - 127 x 352 x 219 mm



**Port Limestone**  
**Port Regent Limestone**  
**Wealden Sussex Sandstone**



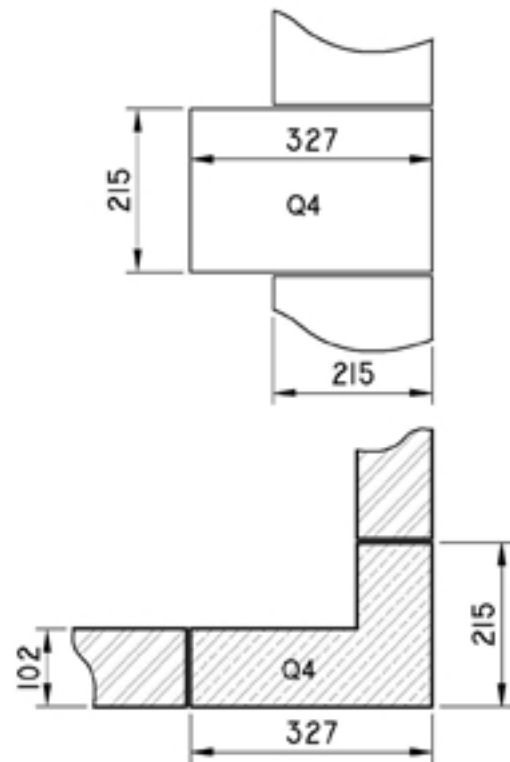
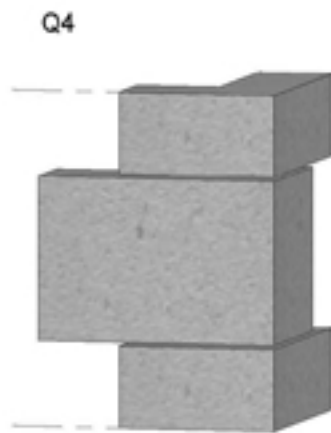
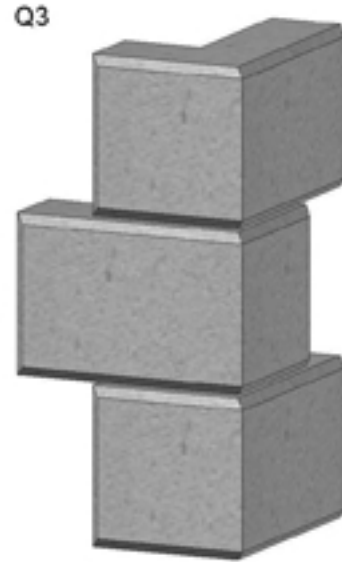
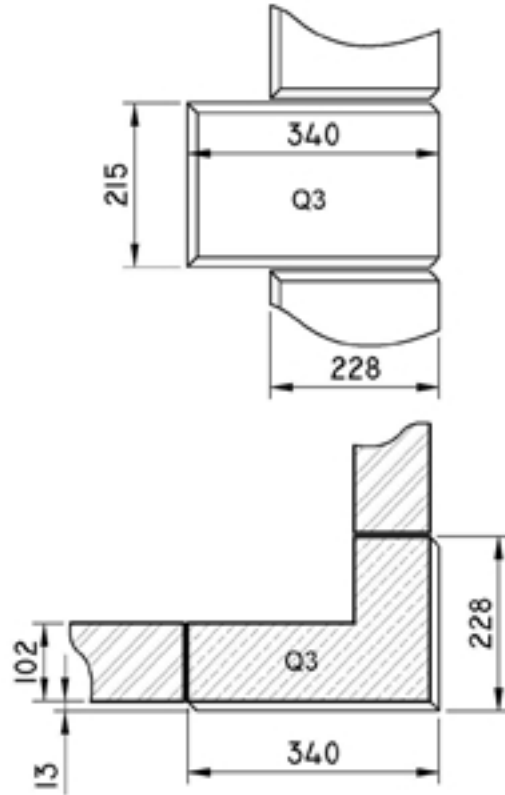
[www.lambstone.com](http://www.lambstone.com)

01342 811311

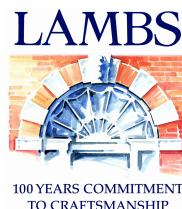
# Standard QUOINS

Q3 - 340 x 228 x 215 mm

Q4 - 327 x 215 x 215 mm



Port Limestone  
Port Regent Limestone  
Wealden Sussex Sandstone



[www.lambstone.com](http://www.lambstone.com)

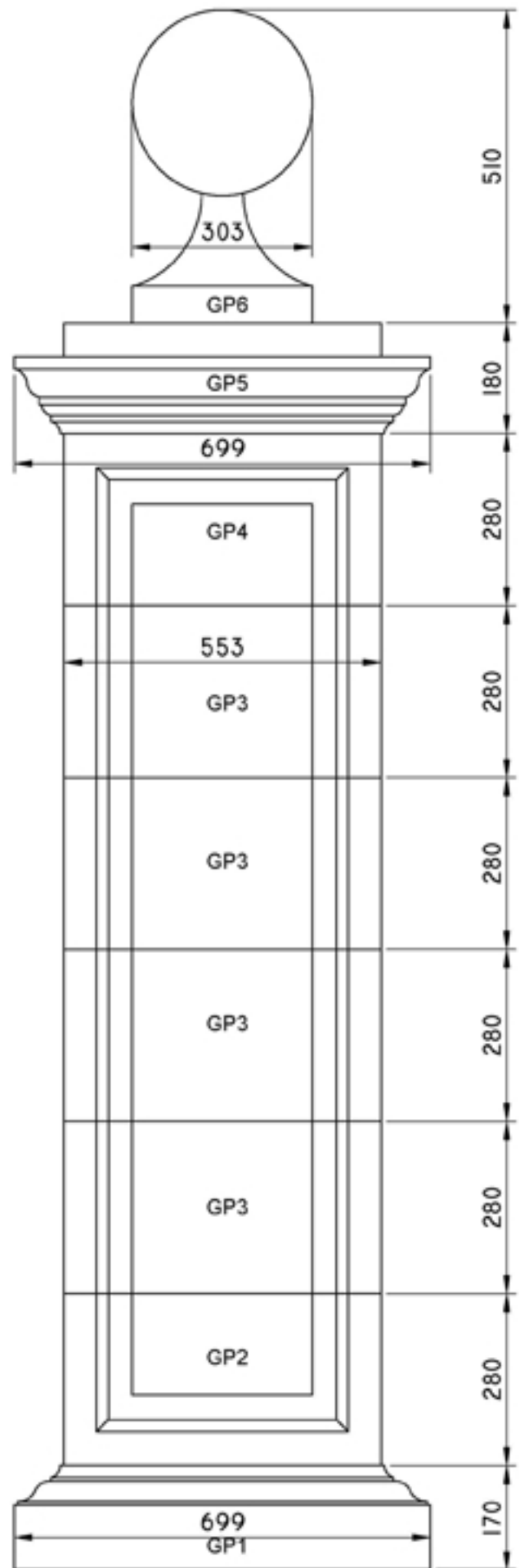
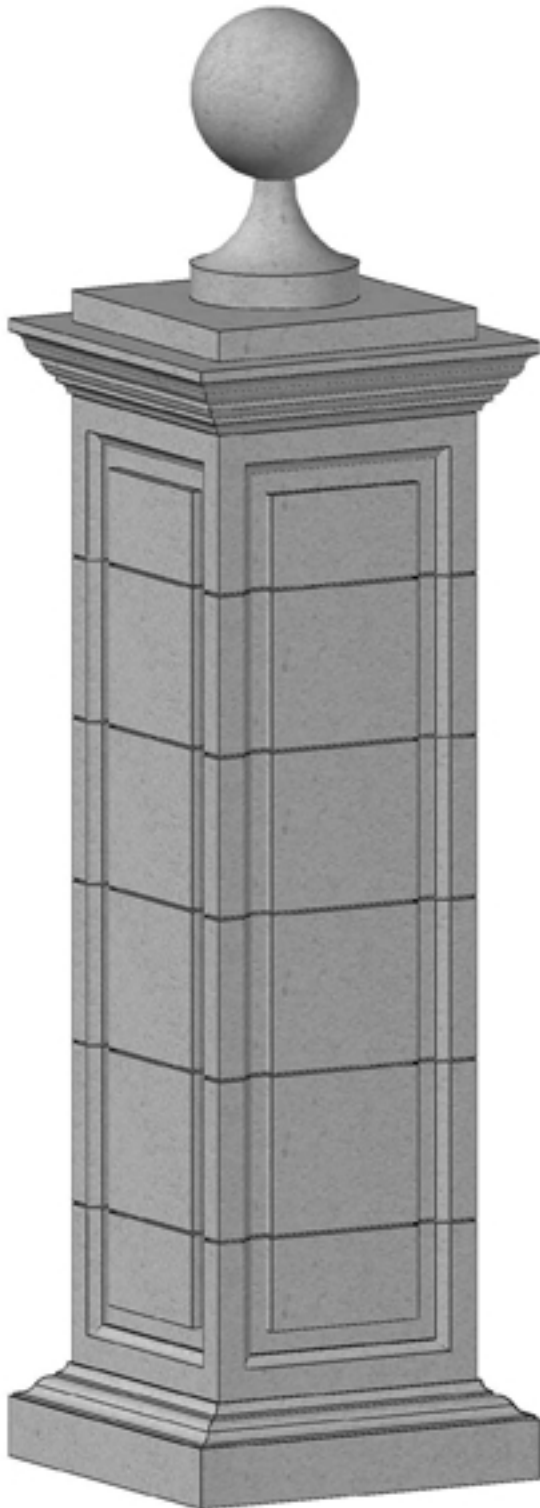
01342 811311

16

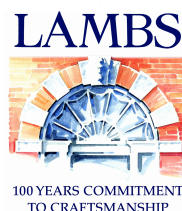


# Standard PIER CAPS

- GP1 - 699 x 699 x 170 mm
- GP2 - 533 x 533 x 280 mm
- GP3 - 533 x 533 x 280 mm
- GP4 - 533 x 533 x 280 mm
- GP5 - 699 x 699 x 180 mm
- GP6 - 303 x 303 x 510 mm



**Port Limestone**  
**Port Regent Limestone**  
**Wealden Sussex Sandstone**

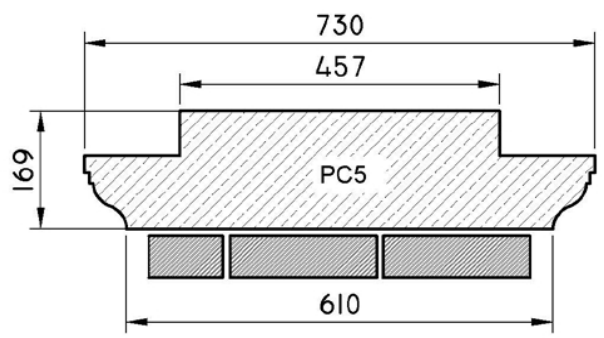
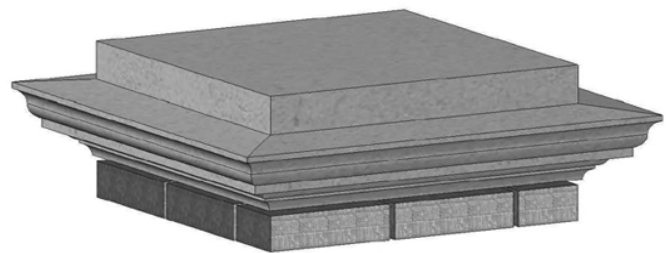
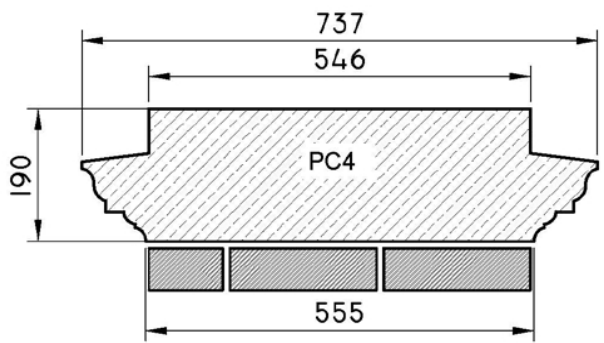
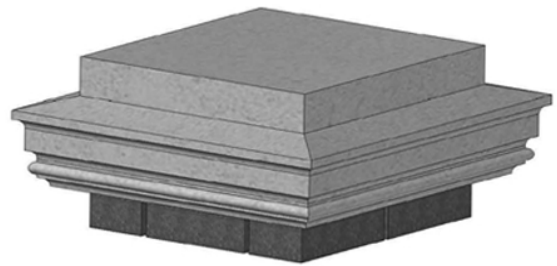
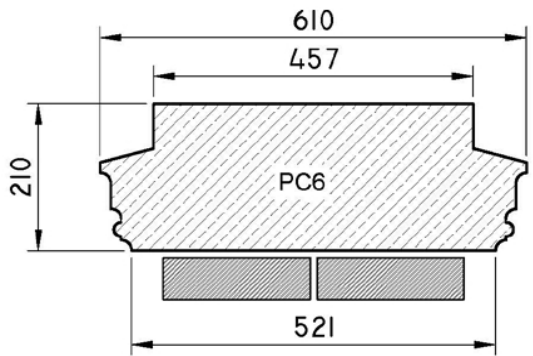
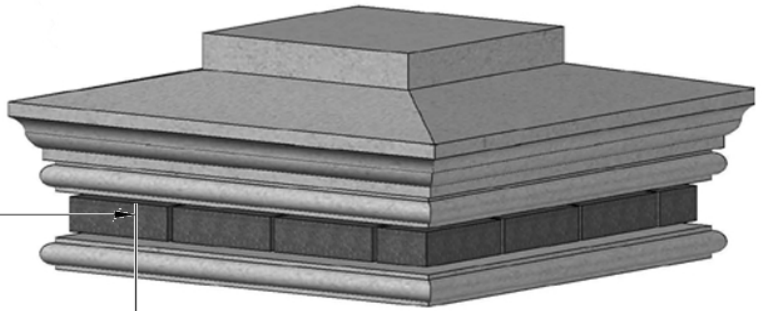
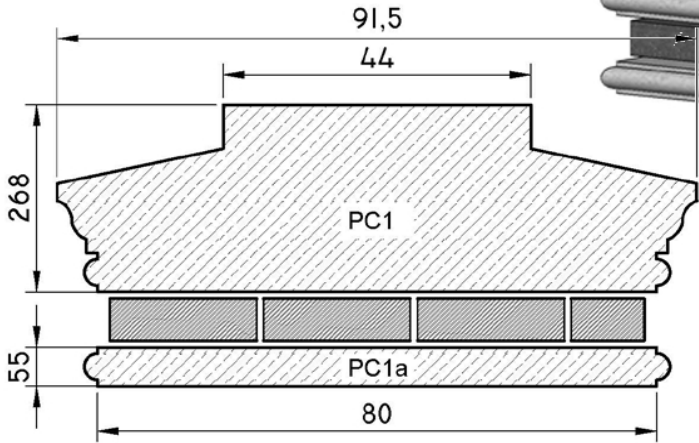


[www.lambstone.com](http://www.lambstone.com)

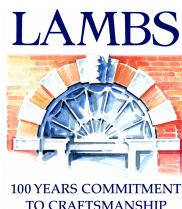
01342 811311

# Standard PIER CAPS

- PC1 - 915 x 915 x 268 mm
- PC1a - 838 x 838 x 55 mm
- PC6 - 610 x 610 x 210 mm
- PC4 - 737 x 737 x 190 mm
- PC5 - 730 x 730 x 169 mm



**Port Limestone**  
**Port Regent Limestone**  
**Wealden Sussex Sandstone**



[www.lamsstone.com](http://www.lamsstone.com)

01342 811311

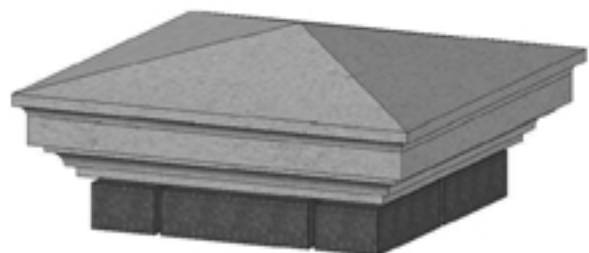
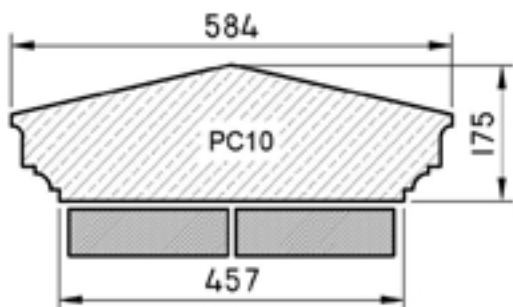
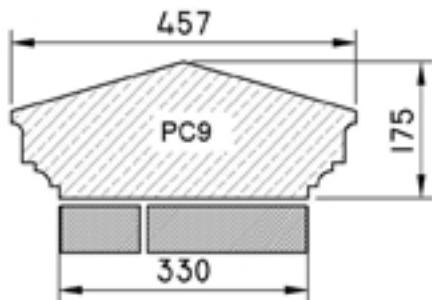
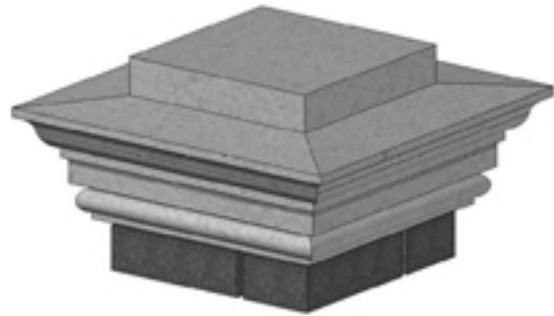
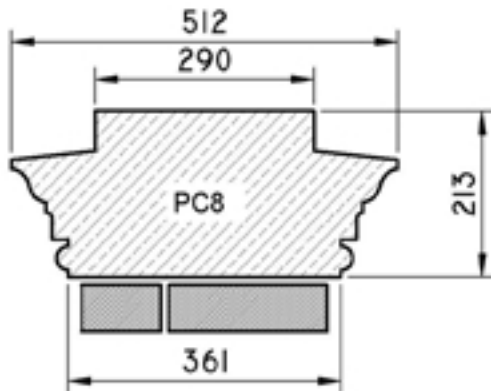
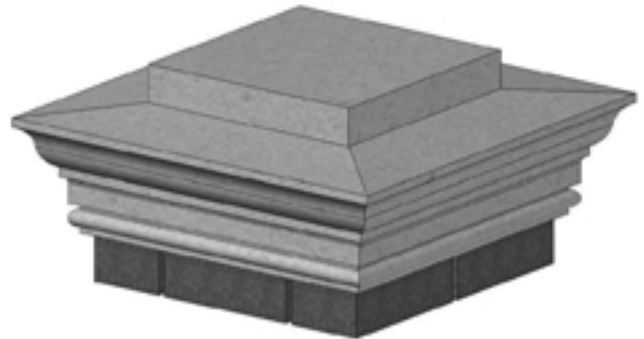
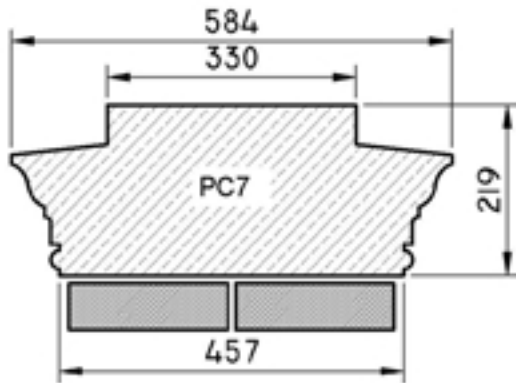
# Standard PIER CAPS

PC7 - 584 x 584 x 219 mm

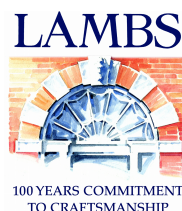
PC8 - 512 x 512 x 213 mm

PC9 - 457 x 457 x 175 mm

PC10 - 584 x 584 x 175 mm



**Port Limestone**  
**Port Regent Limestone**  
**Wealden Sussex Sandstone**



[www.lambstone.com](http://www.lambstone.com)

01342 811311

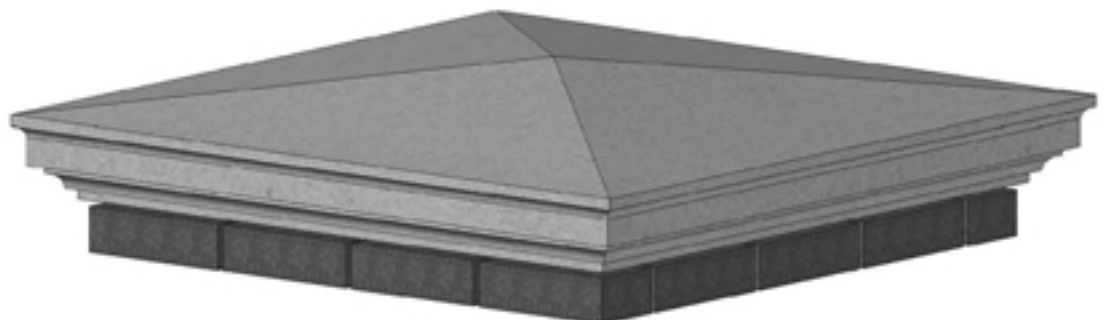
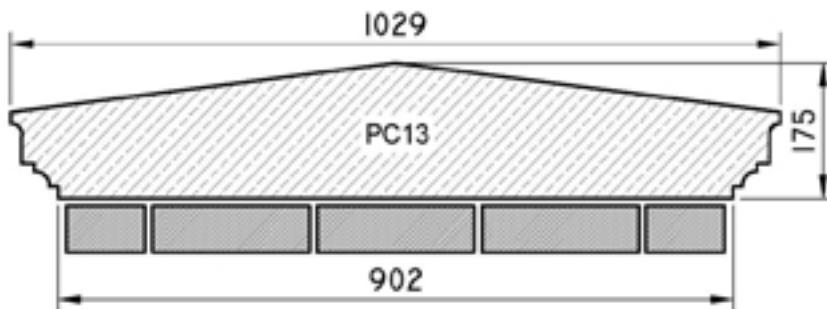
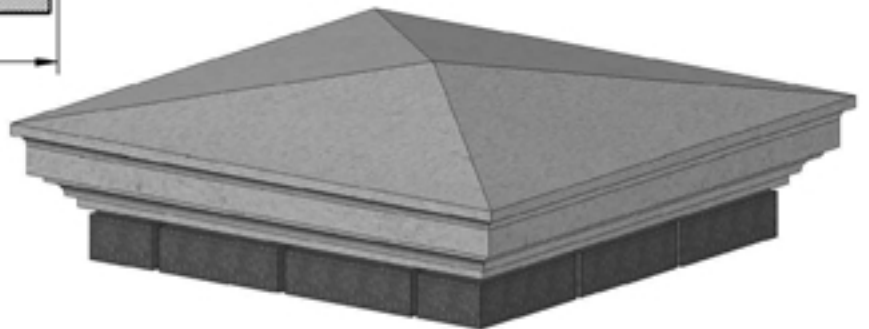
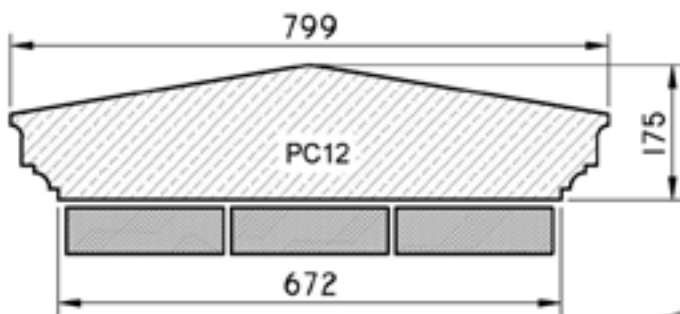
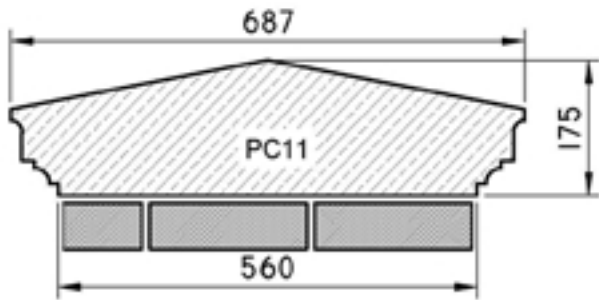
19

# Standard PIER CAPS

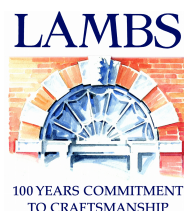
PC11 - 687 x 687 x 175 mm

PC12 - 799 x 799 x 175 mm

PC13 - 1029 x 1029 x 175 mm



**Port Limestone**  
**Port Regent Limestone**  
**Wealden Sussex Sandstone**



[www.lambstone.com](http://www.lambstone.com)

01342 811311

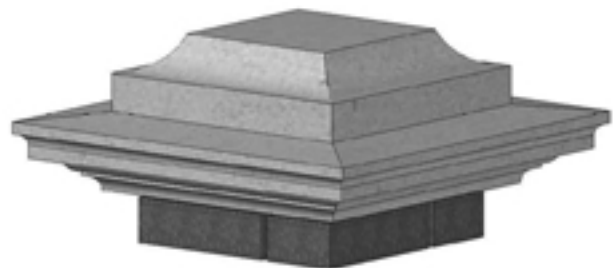
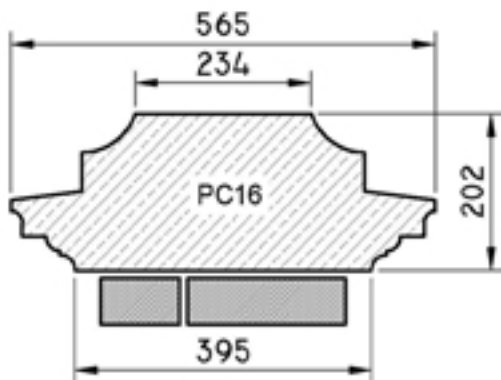
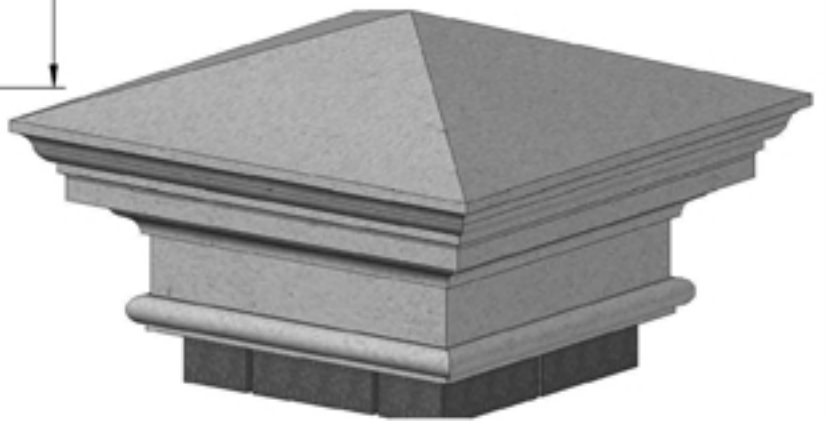
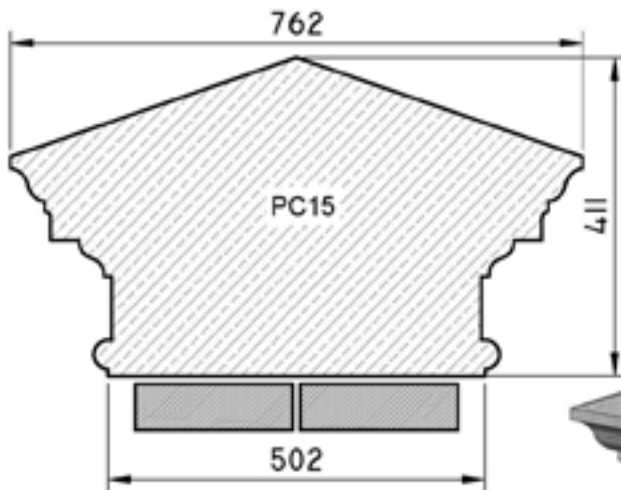
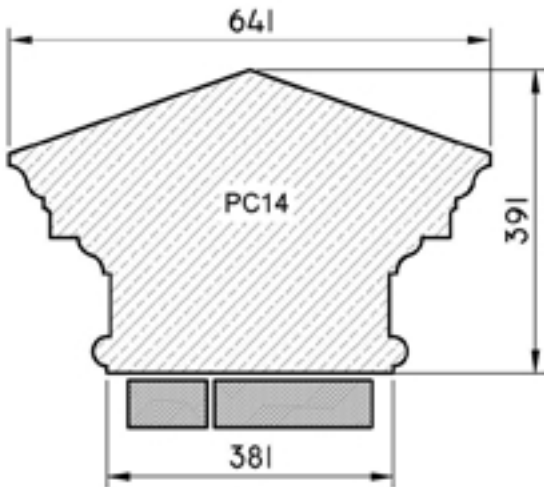
20

# Standard PIER CAPS

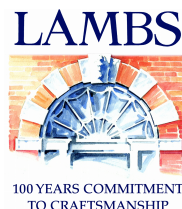
PC14 - 762 x 762 x 411 mm

PC15 - 641 x 641 x 391 mm

PC16 - 565 x 565 x 202 mm



**Port Limestone**  
**Port Regent Limestone**  
**Wealden Sussex Sandstone**



[www.lamsstone.com](http://www.lamsstone.com)

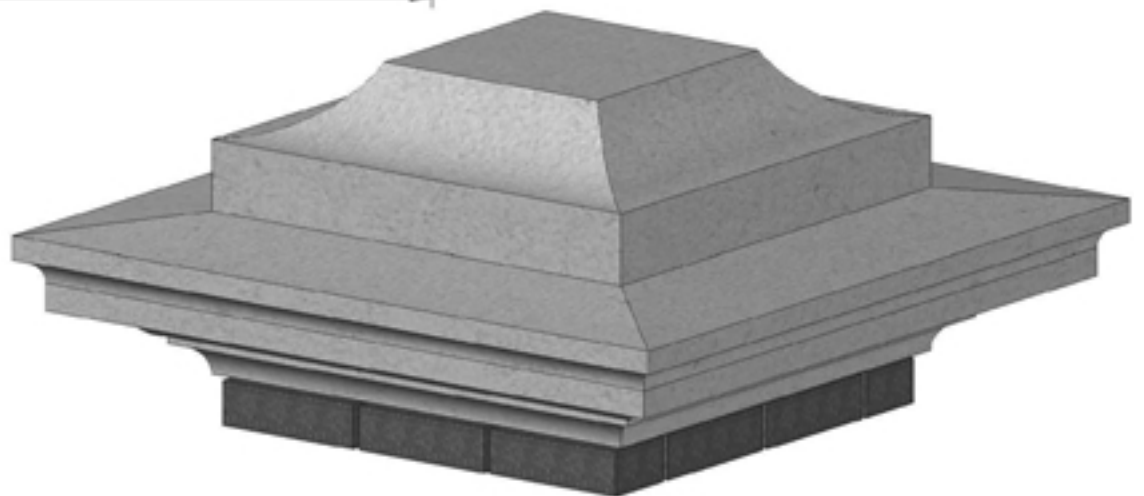
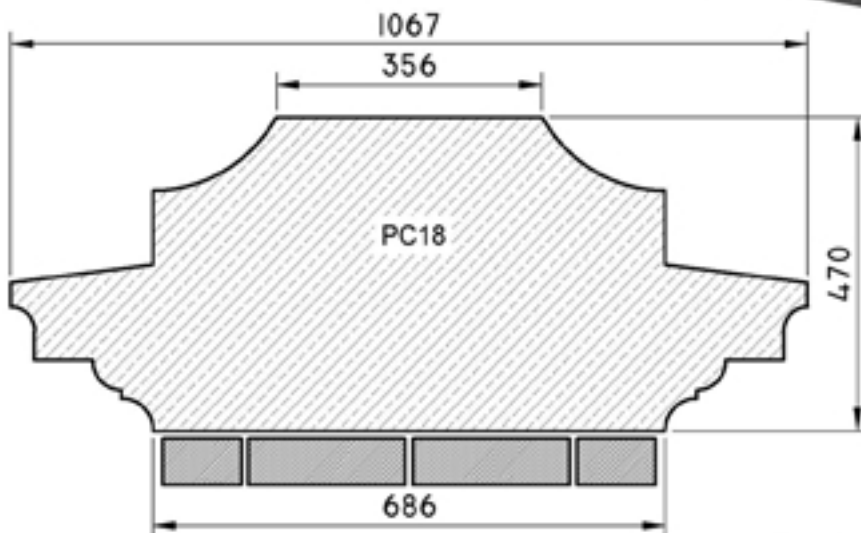
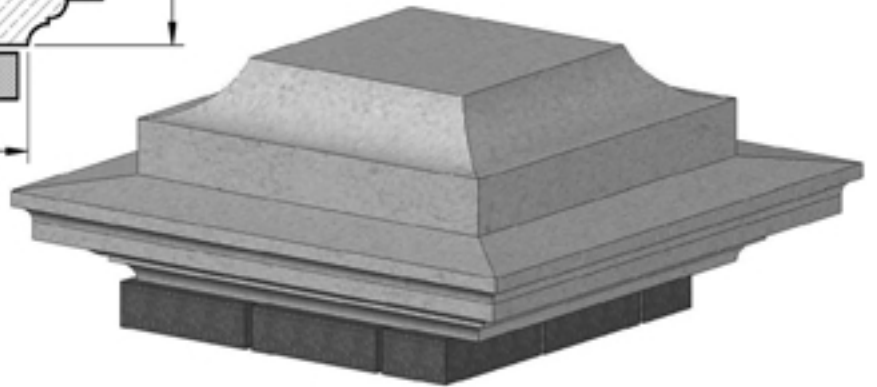
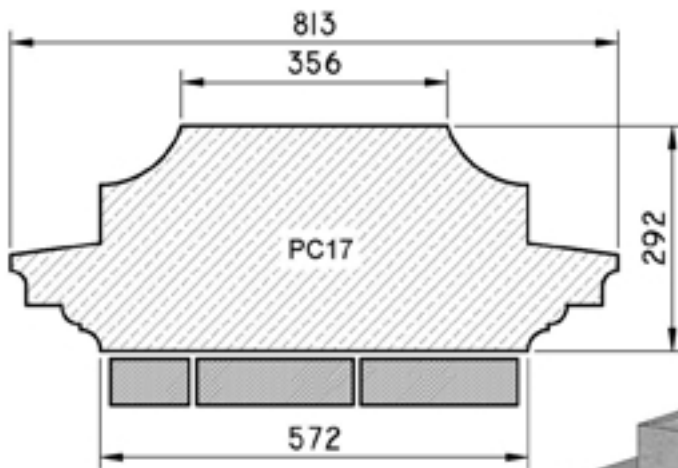
01342 811311

21

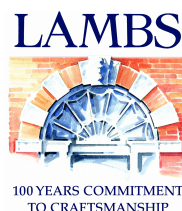
# Standard PIER CAPS

PC17 - 813 x 813 x 292 mm

PC18 - 1067 x 1067 x 407 mm



**Port Limestone**  
**Port Regent Limestone**  
**Wealden Sussex Sandstone**



[www.lambstone.com](http://www.lambstone.com)

01342 811311

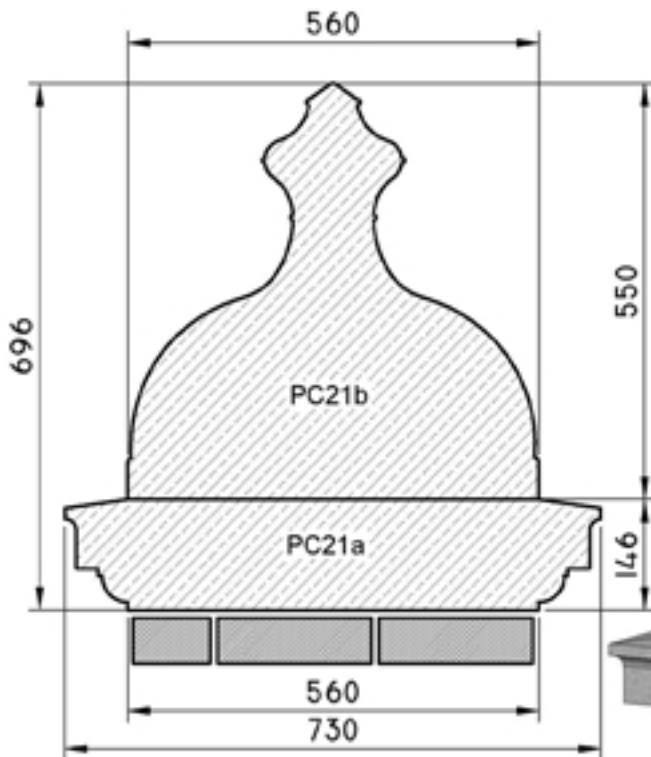
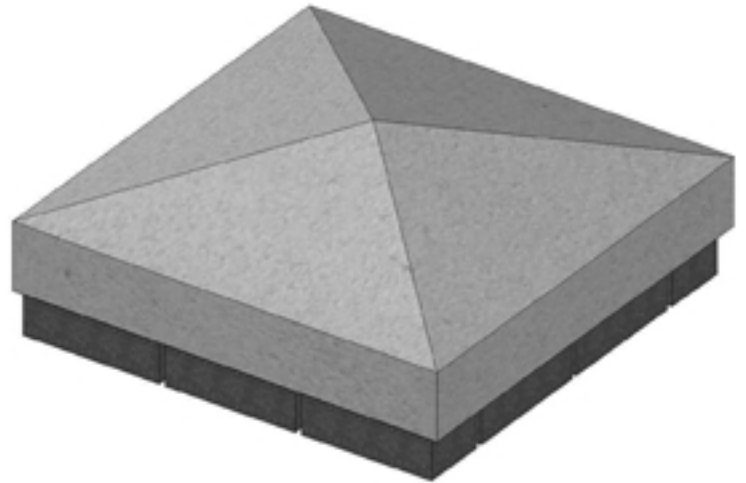
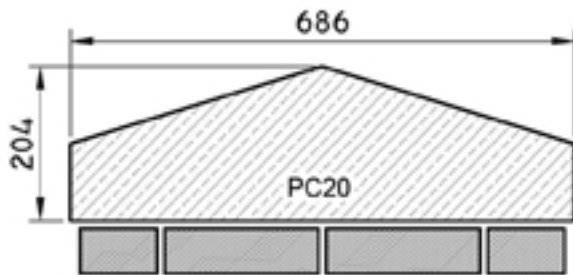
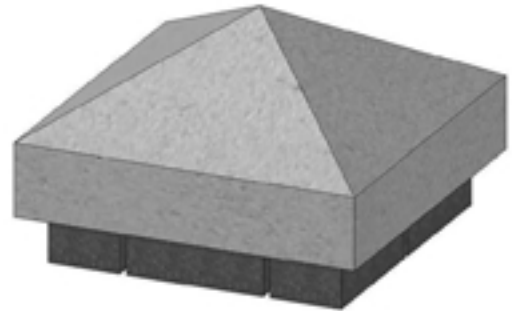
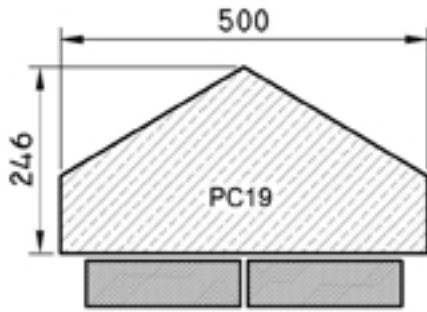
# Standard PIER CAPS

PC19 - 500 x 500 x 246 mm

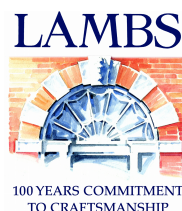
PC20 - 686 x 686 x 204 mm

PC21a - 730 x 730 x 146 mm

PC21b - 560 x 560 x 550 mm



**Port Limestone**  
**Port Regent Limestone**  
**Wealden Sussex Sandstone**



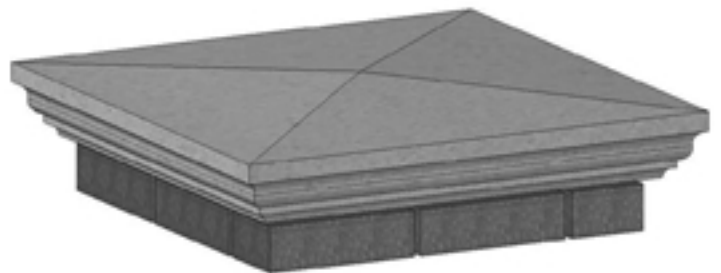
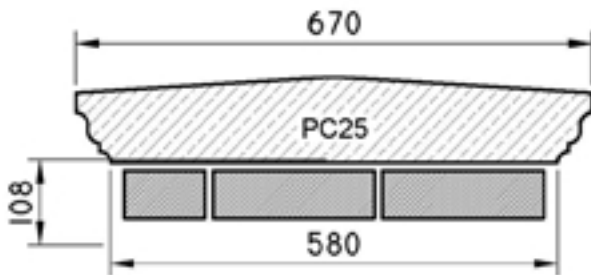
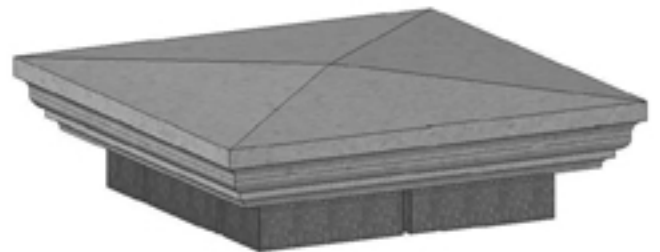
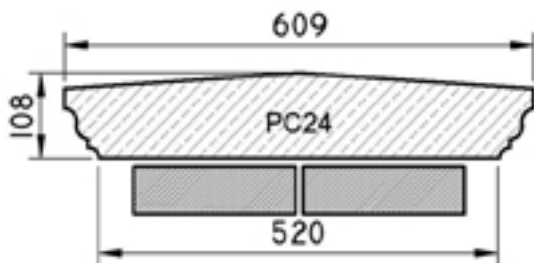
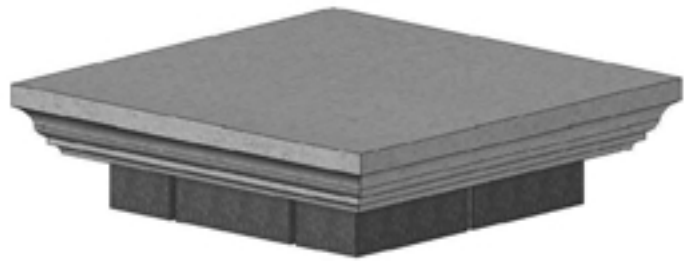
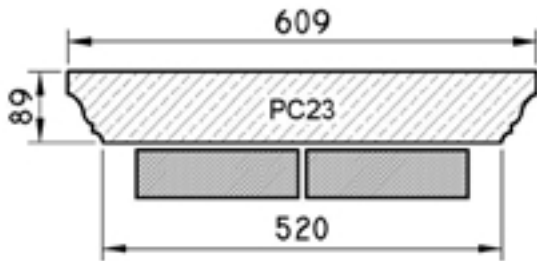
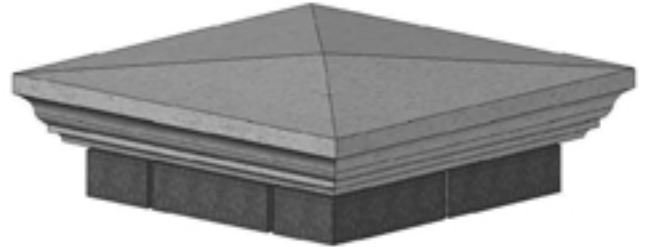
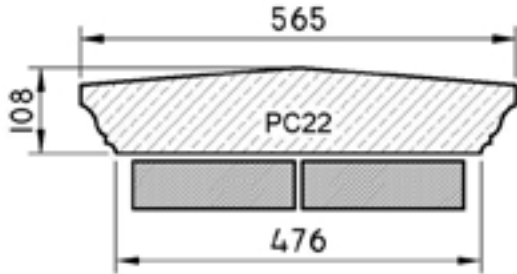
[www.lamsstone.com](http://www.lamsstone.com)

01342 811311

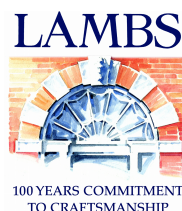
# Standard PIER CAPS

PC22 - 565 x 565 x 108 mm  
 PC23 - 609 x 609 x 89 mm

PC24 - 609 x 609 x 108 mm  
 PC25 - 670 x 670 x 108 mm



**Port Limestone**  
**Port Regent Limestone**  
**Wealden Sussex Sandstone**



[www.lambstone.com](http://www.lambstone.com)

01342 811311



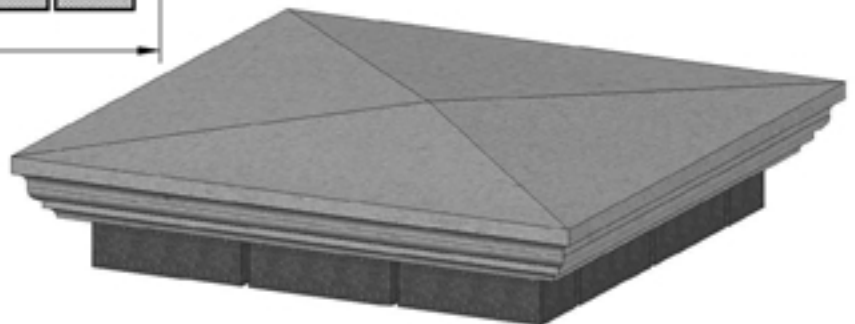
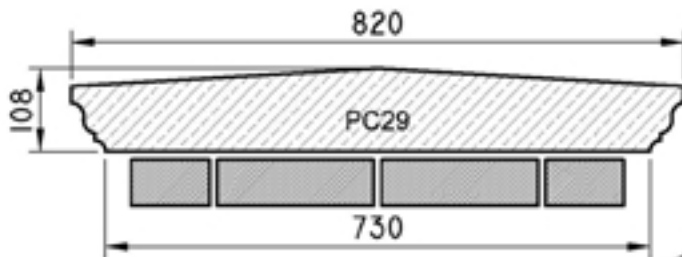
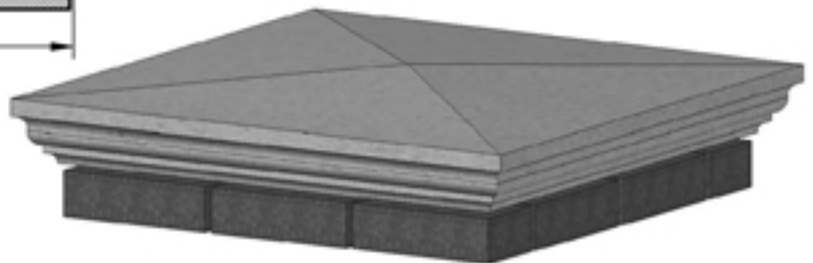
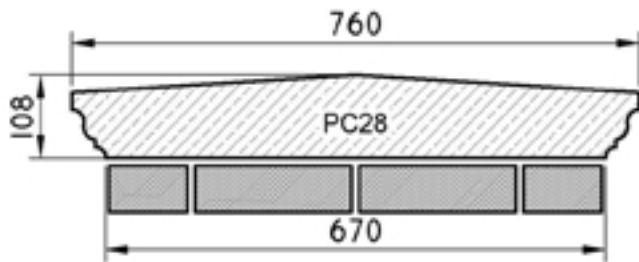
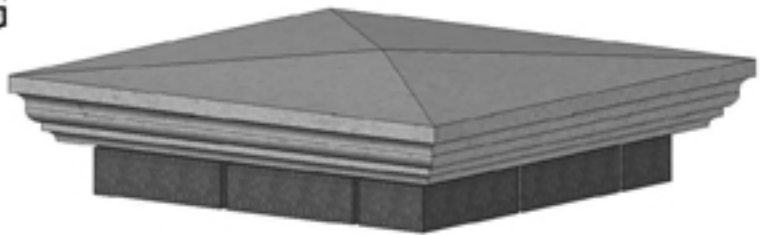
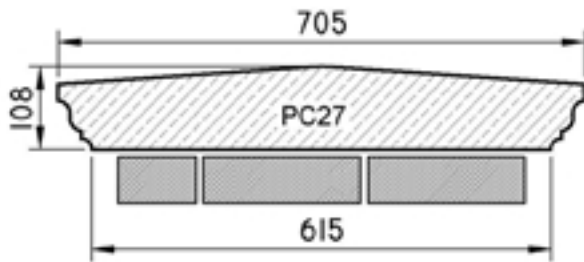
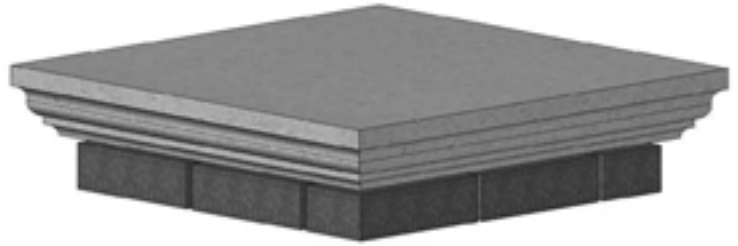
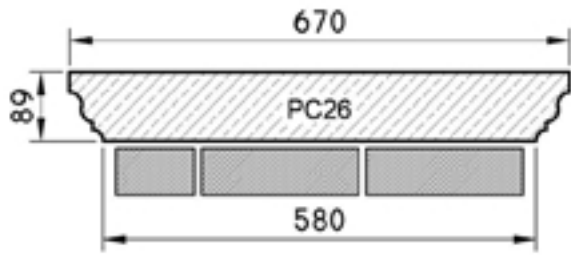
# Standard PIER CAPS

PC26 - 670 x 670 x 89 mm

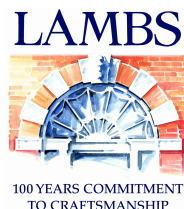
PC27 - 705 x 705 x 108 mm

PC28 - 760 x 760 x 108 mm

PC29 - 820 x 820 x 108 mm



**Port Limestone**  
**Port Regent Limestone**  
**Wealden Sussex Sandstone**



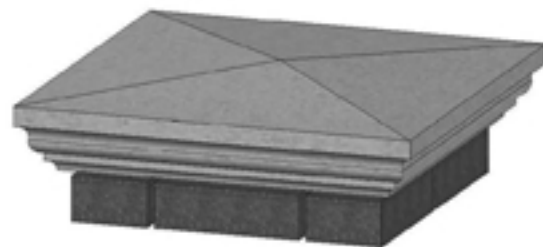
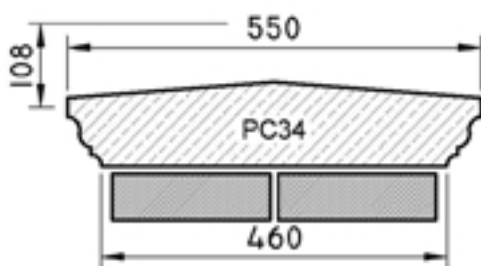
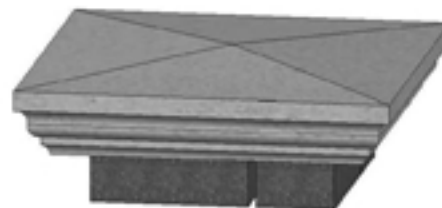
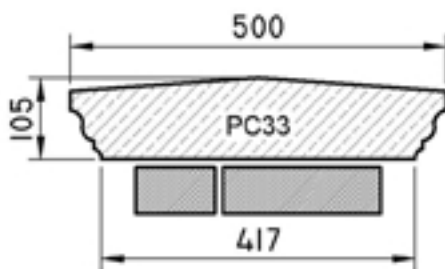
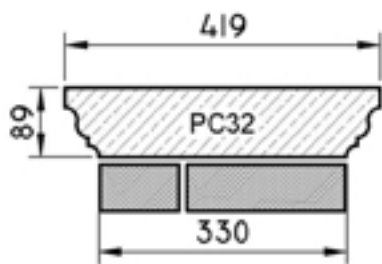
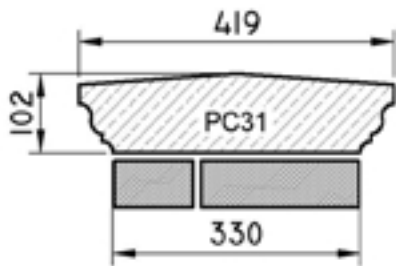
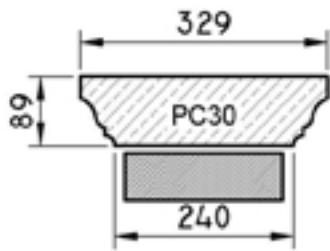
[www.lamsstone.com](http://www.lamsstone.com)

01342 811311

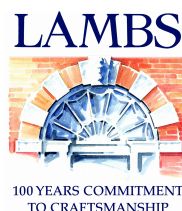
# Standard PIER CAPS

PC30 - 329 x 329 x 89 mm  
 PC31 - 419 x 419 x 102 mm  
 PC32 - 419 x 419 x 89 mm

PC33 - 500 x 500 x 105 mm  
 PC34 - 550 x 550 x 108 mm



**Port Limestone**  
**Port Regent Limestone**  
**Wealden Sussex Sandstone**



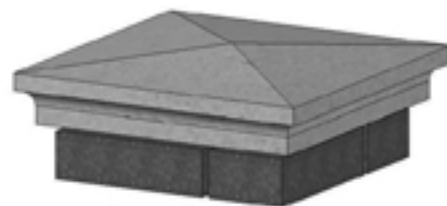
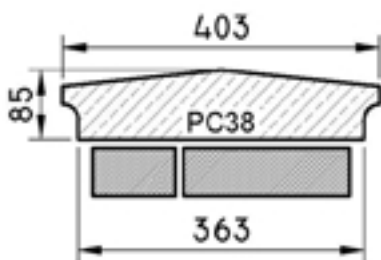
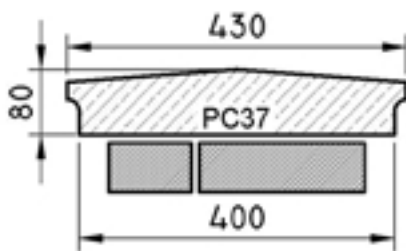
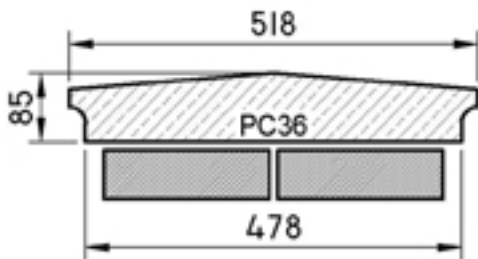
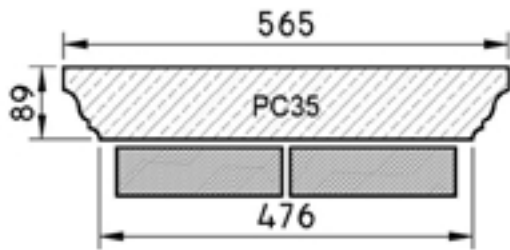
[www.lambstone.com](http://www.lambstone.com)

01342 811311

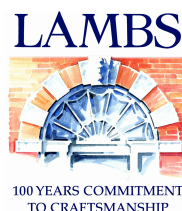
# Standard PIER CAPS

PC35 - 565 x 565 x 89 mm  
 PC36 - 518 x 518 x 85 mm

PC37 - 430 x 430 x 80 mm  
 PC38 - 403 x 403 x 85 mm



**Port Limestone**  
**Port Regent Limestone**  
**Wealden Sussex Sandstone**



[www.lambstone.com](http://www.lambstone.com)

01342 811311

# Standard PIER CAPS

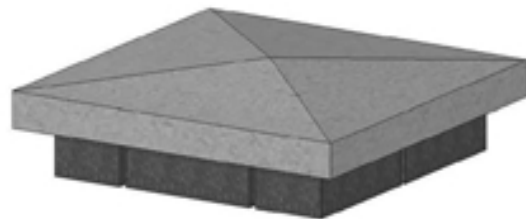
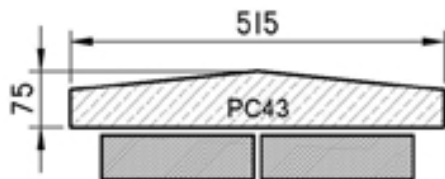
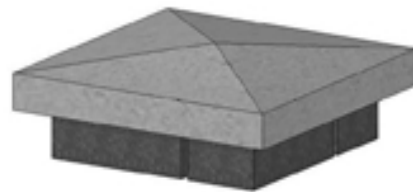
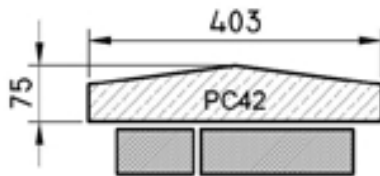
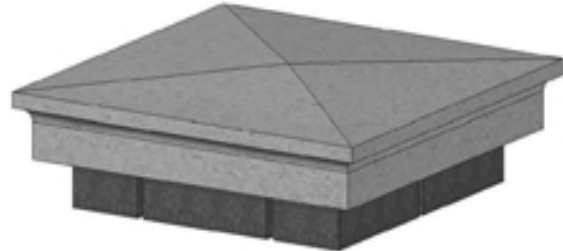
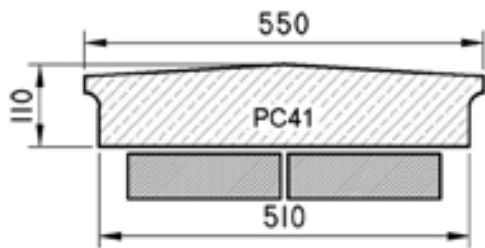
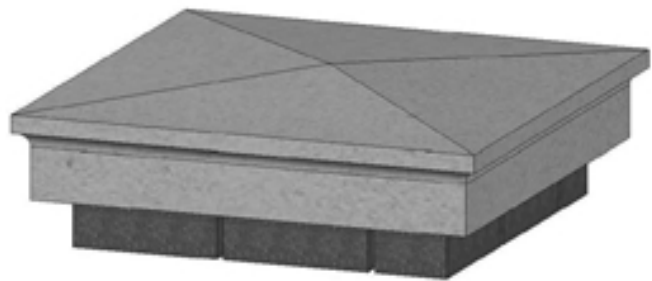
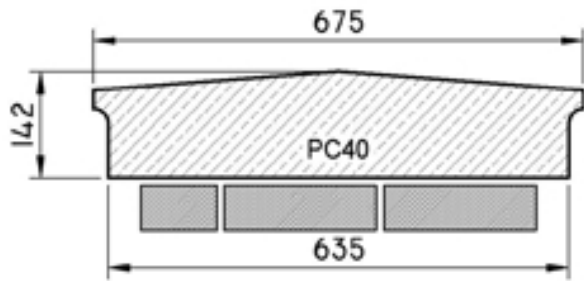
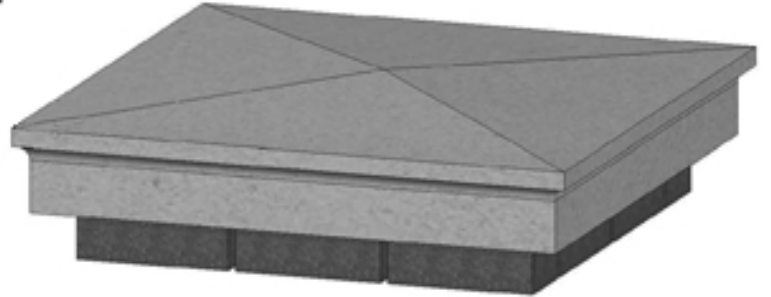
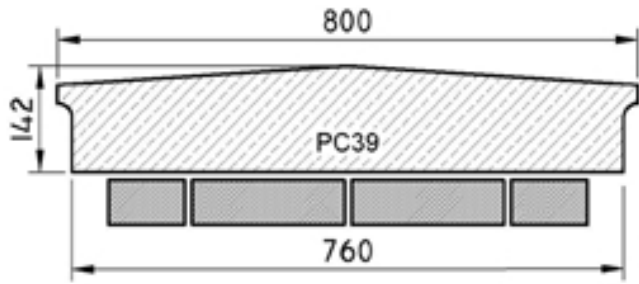
PC39 - 800 x 800 x 142 mm

PC40 - 675 x 675 x 142 mm

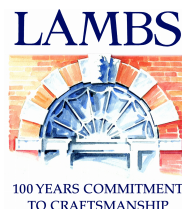
PC41 - 550 x 550 x 110 mm

PC42 - 403 x 403 x 75 mm

PC43 - 515 x 515 x 75 mm



**Port Limestone**  
**Port Regent Limestone**  
**Wealden Sussex Sandstone**



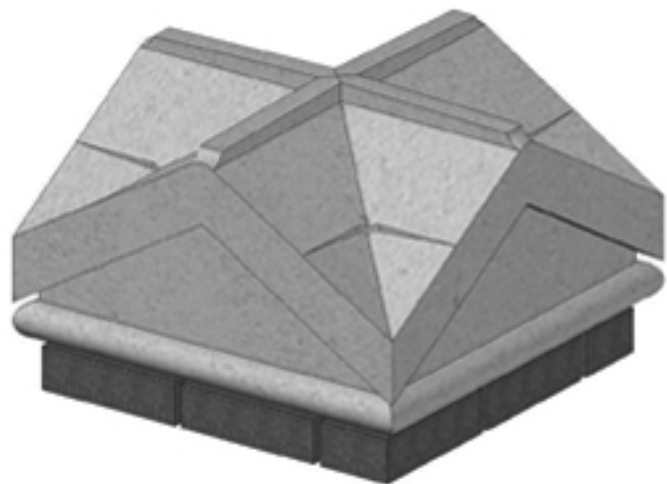
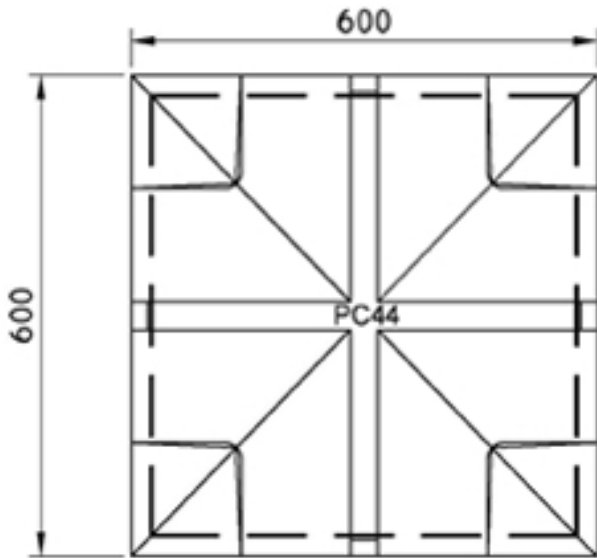
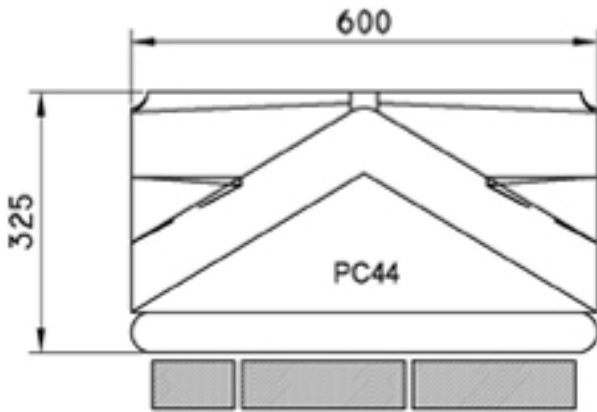
[www.lambstone.com](http://www.lambstone.com)

01342 811311

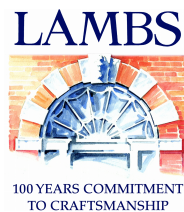
28

# Standard PIER CAPS

PC44 - 600 x 600 x 325



**Port Limestone**  
**Port Regent Limestone**  
**Wealden Sussex Sandstone**



[www.lambstone.com](http://www.lambstone.com)

01342 811311

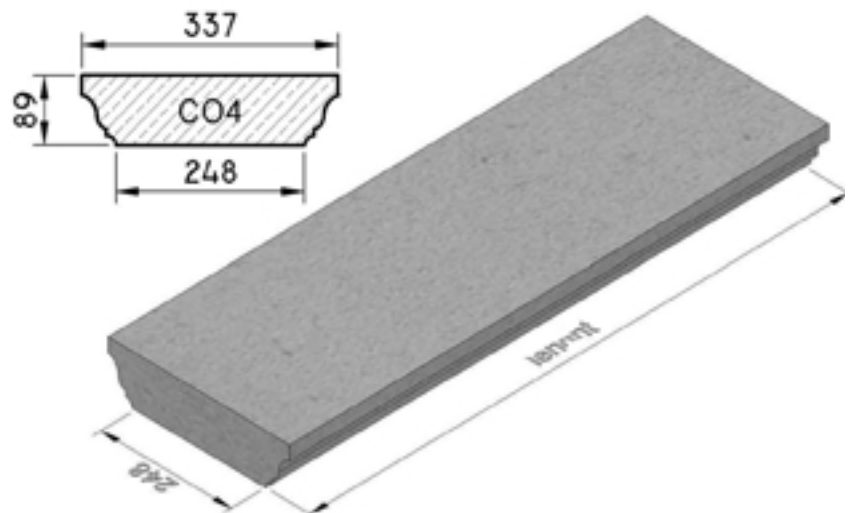
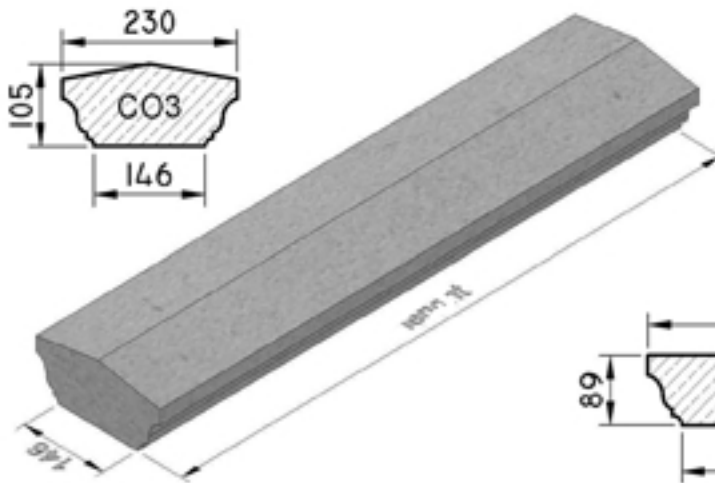
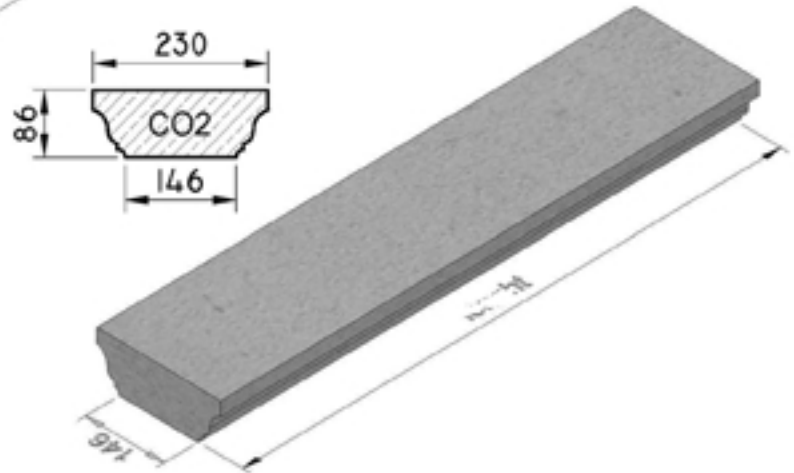
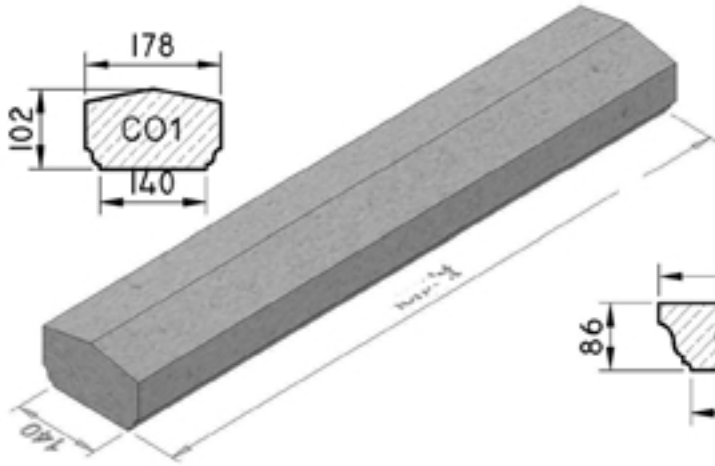
# Standard COPINGS

CO1 - 178 x 102 mm

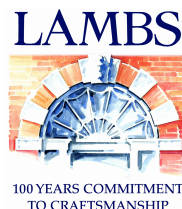
CO2 - 230 x 86 mm

CO3 - 230 x 105 mm

CO4 - 337 x 89 mm



Port Limestone  
Port Regent Limestone  
Wealden Sussex Sandstone



[www.lamsstone.com](http://www.lamsstone.com)

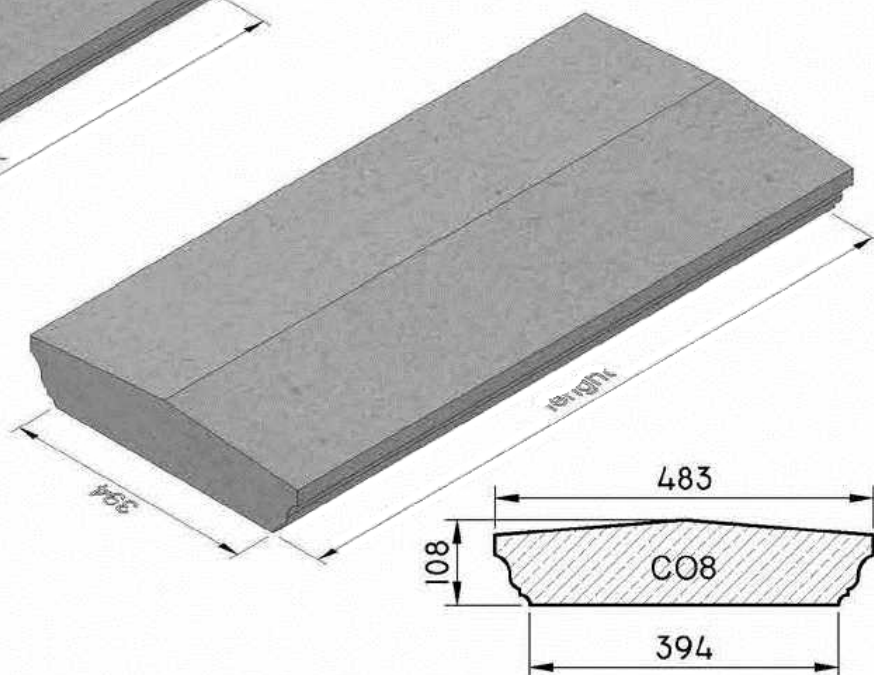
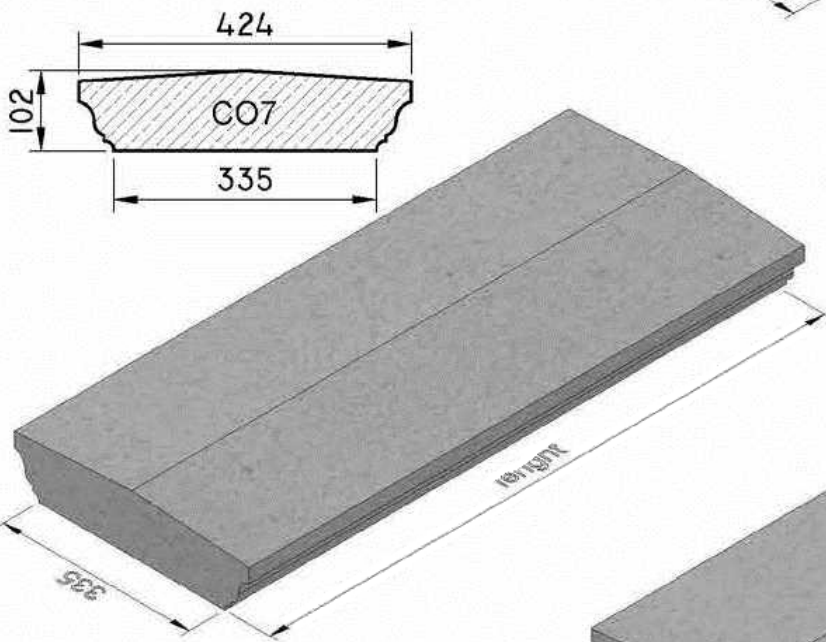
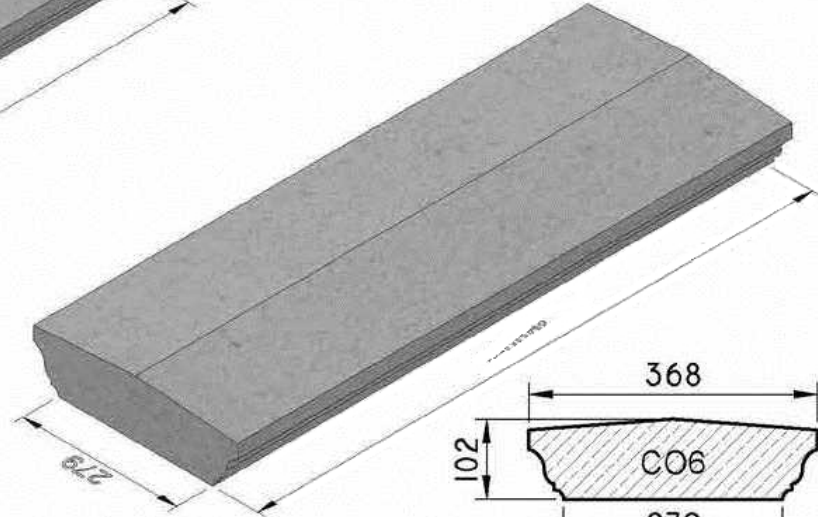
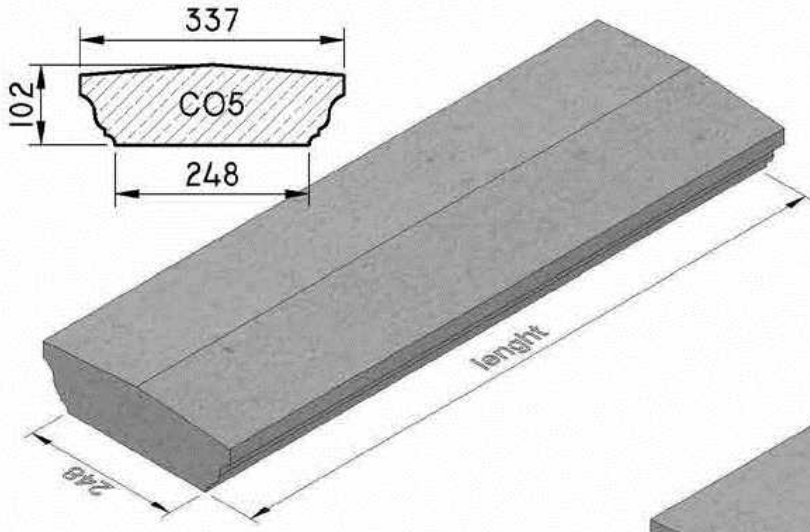
01342 811311

30

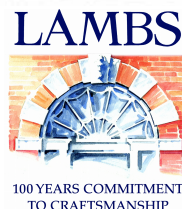
# Standard COPINGS

CO5 - 337 x 102 mm  
CO6 - 368 x 102 mm

CO7 - 424 x 102 mm  
CO8 - 483 x 108 mm



**Port Limestone**  
**Port Regent Limestone**  
**Wealden Sussex Sandstone**

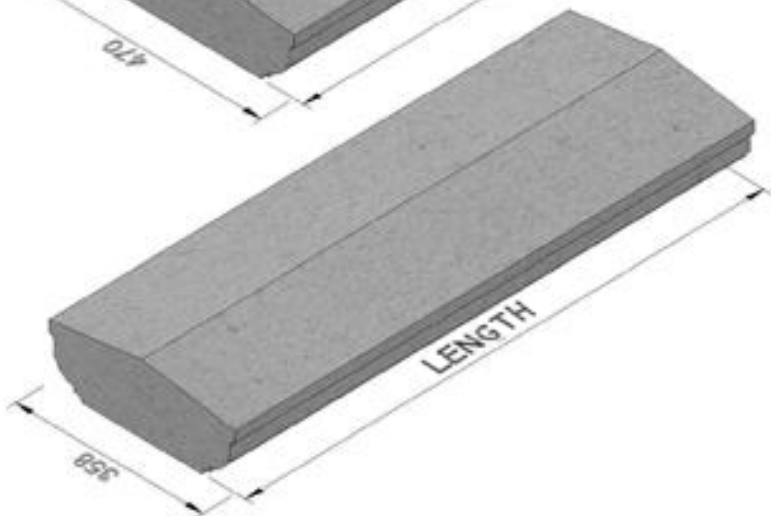
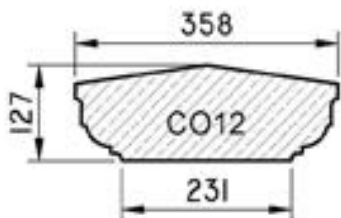
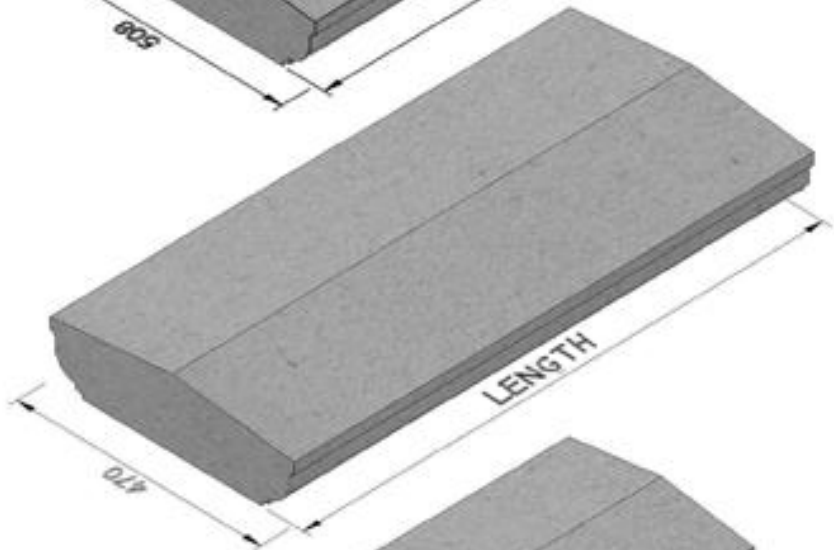
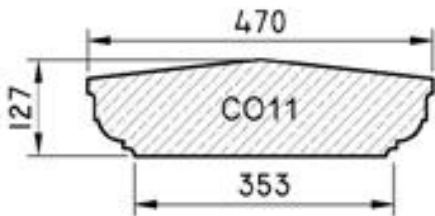
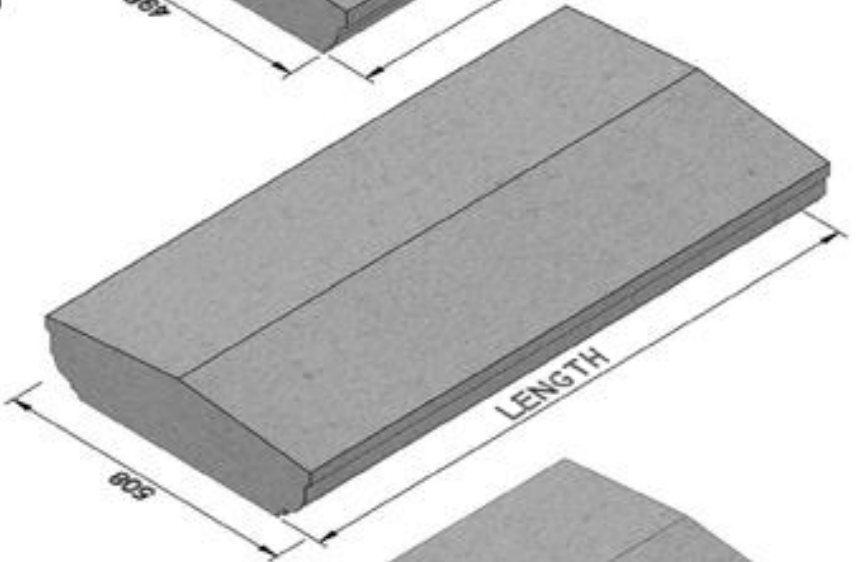
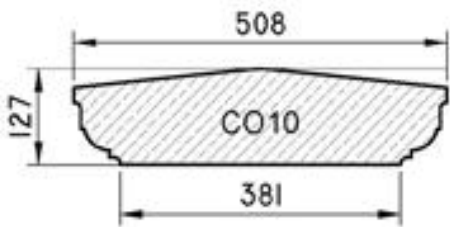
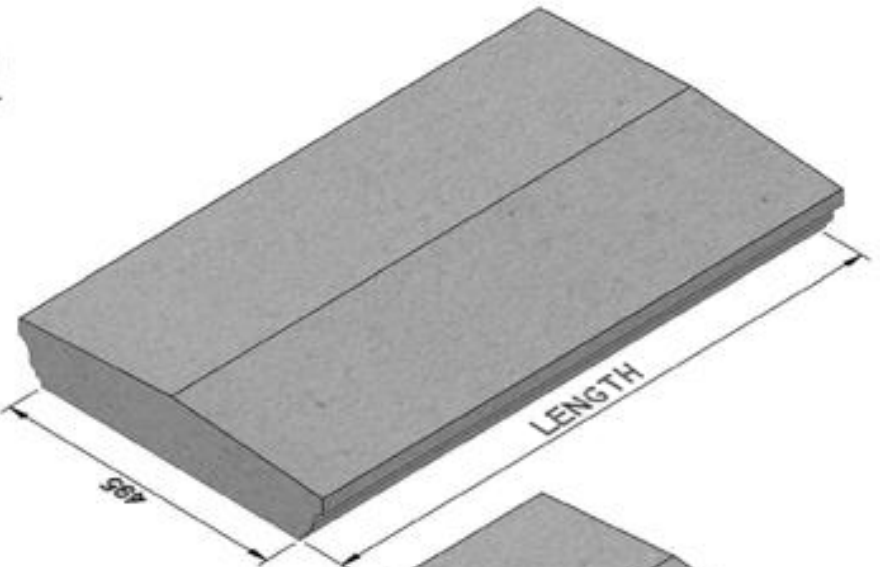
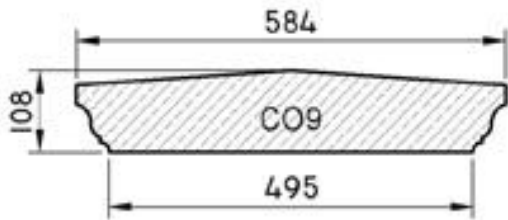


[www.lambstone.com](http://www.lambstone.com)

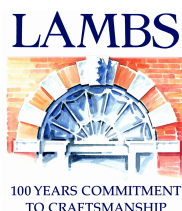
01342 811311

# Standard COPINGS

- CO9 - 584 x 108 mm
- CO10 - 508 x 127 mm
- CO11 - 470 x 127 mm
- CO12 - 358 x 127 mm



**Port Limestone**  
**Port Regent Limestone**  
**Wealden Sussex Sandstone**



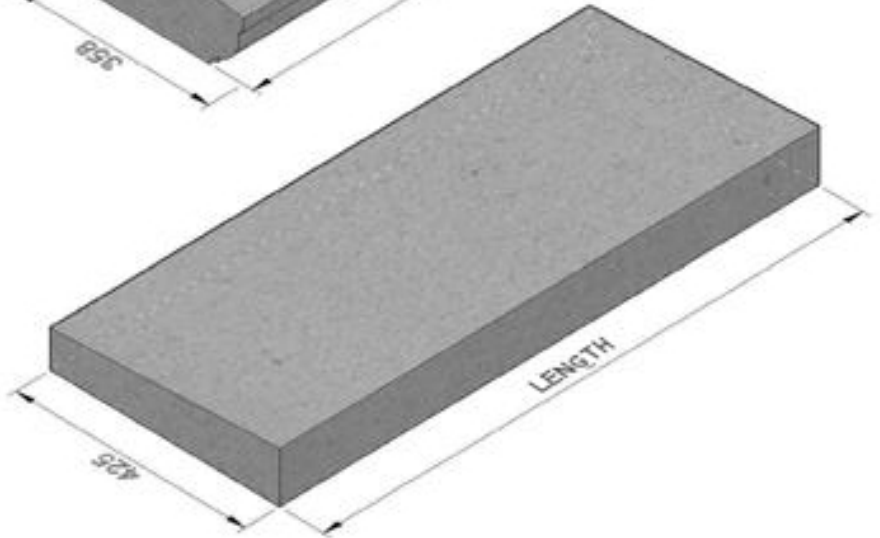
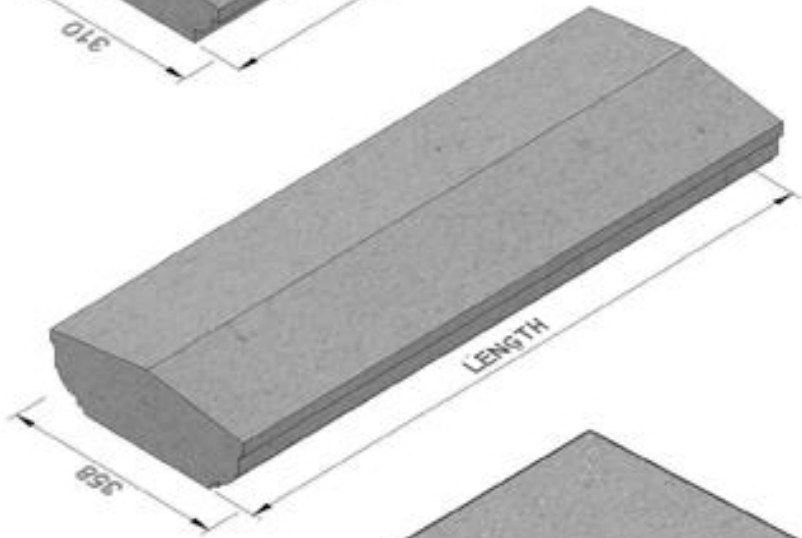
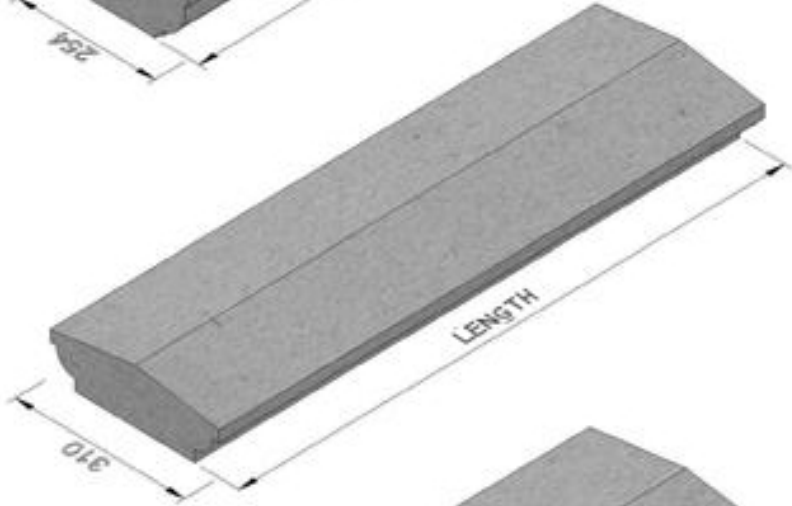
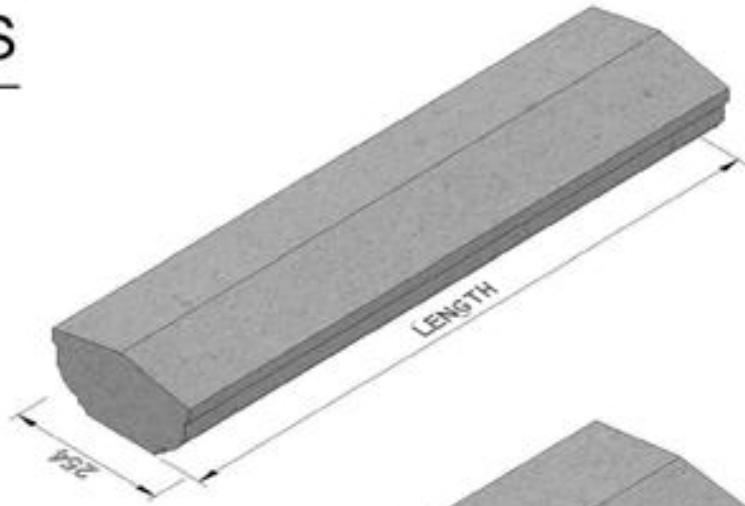
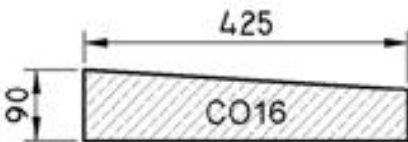
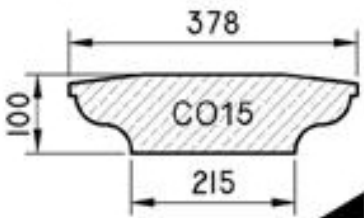
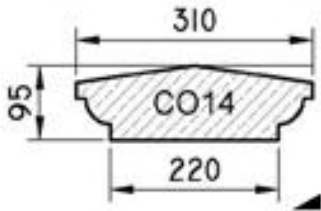
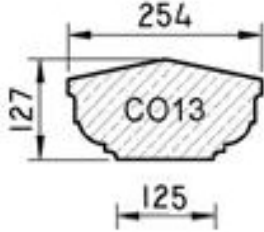
[www.lamsstone.com](http://www.lamsstone.com)

01342 811311

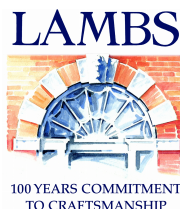


# Standard COPINGS

- CO14 - 310 x 95 mm
- CO15 - 378 x 100 mm
- CO16 - 425 x 90 mm
- CO13 - 254 x 127 mm



**Port Limestone**  
**Port Regent Limestone**  
**Wealden Sussex Sandstone**

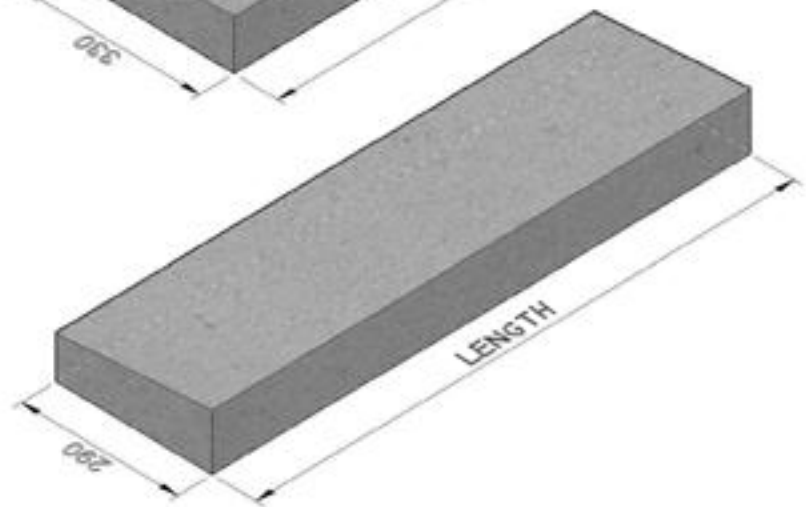
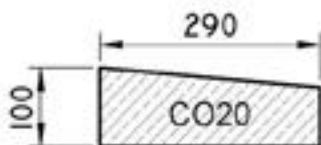
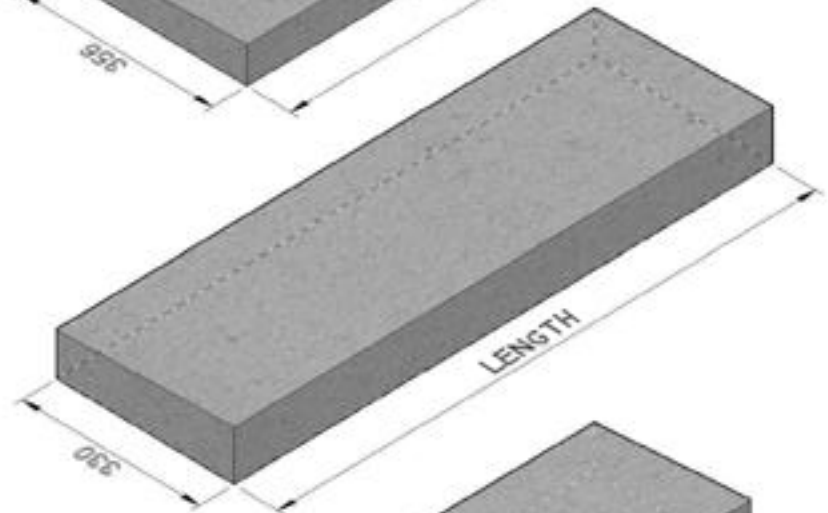
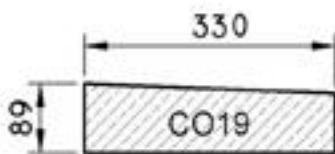
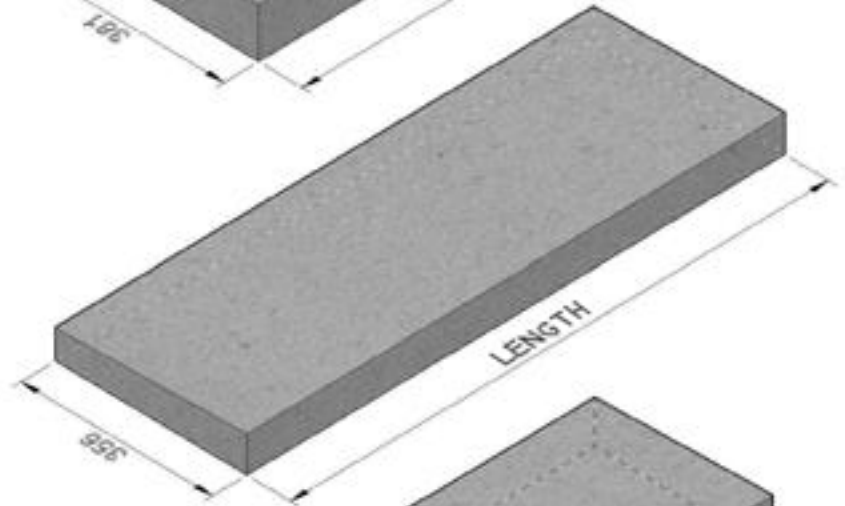
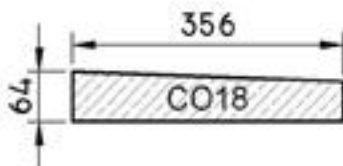
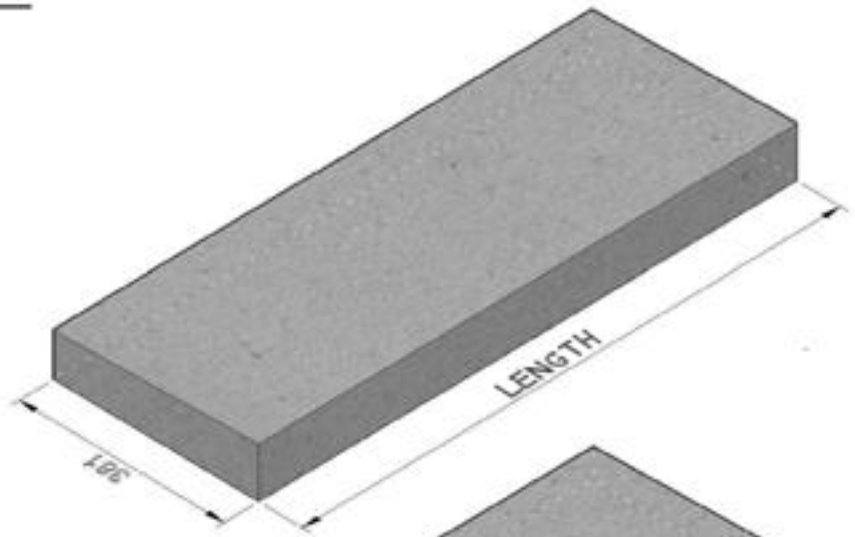
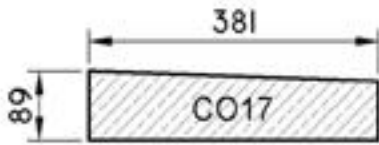


[www.lamsstone.com](http://www.lamsstone.com)

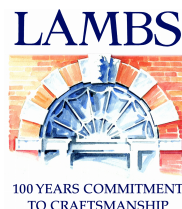
01342 811311

# Standard COPINGS

- CO17 - 381 x 89 mm
- CO18 - 356 x 64 mm
- CO19 - 330 x 89 mm
- CO20 - 290 x 100 mm



Port Limestone  
Port Regent Limestone  
Wealden Sussex Sandstone



[www.lamsstone.com](http://www.lamsstone.com)

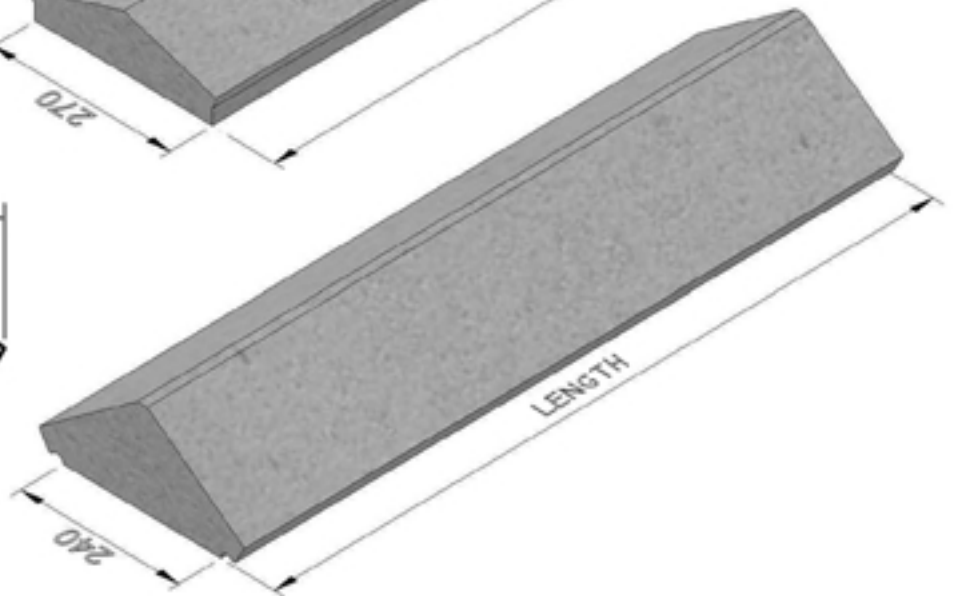
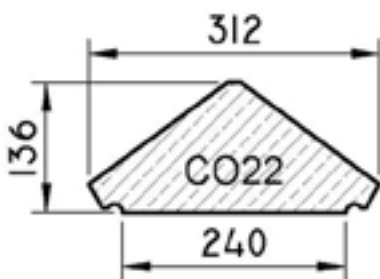
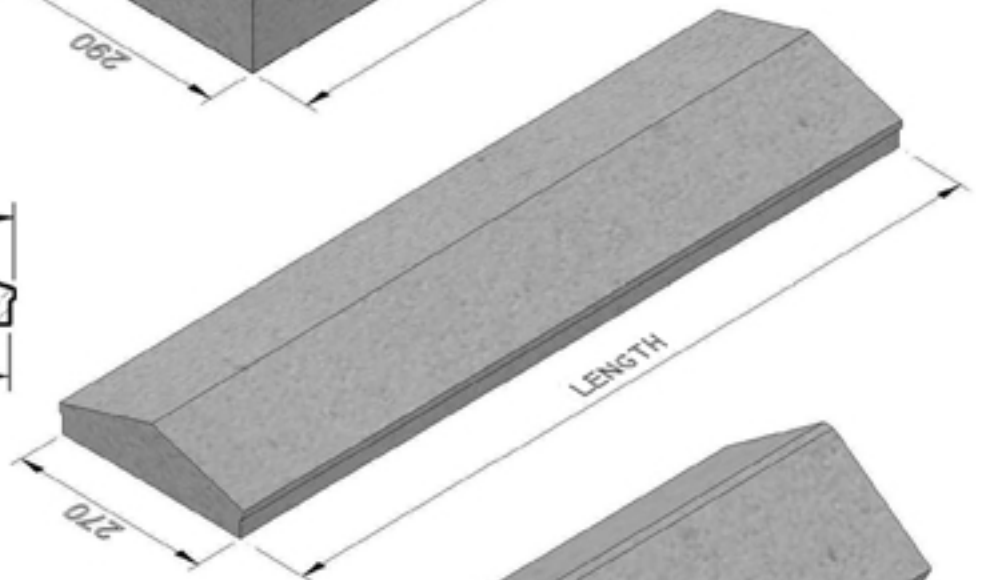
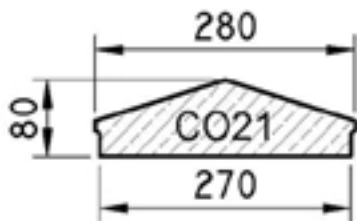
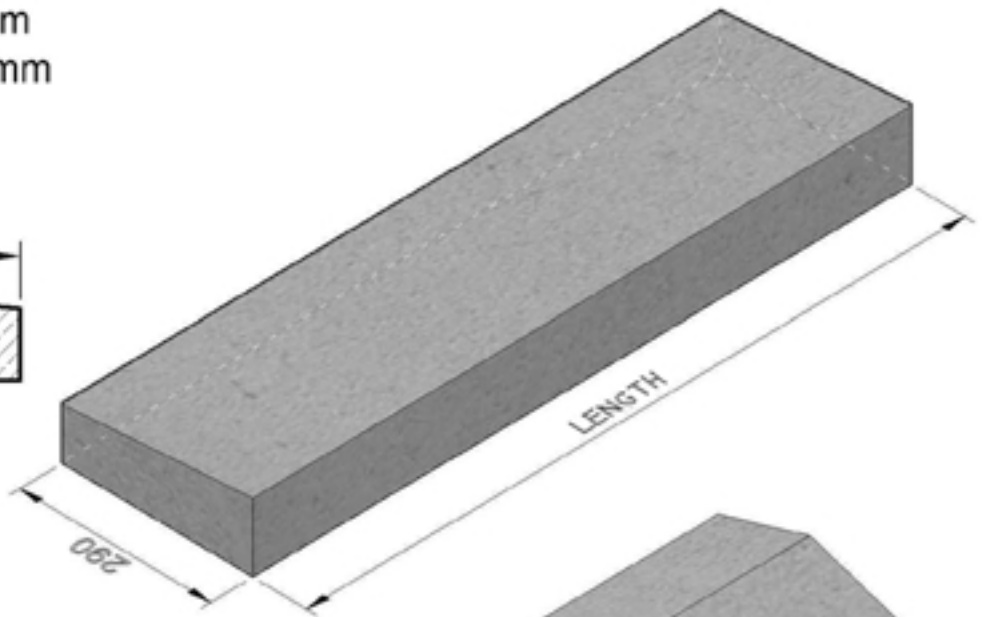
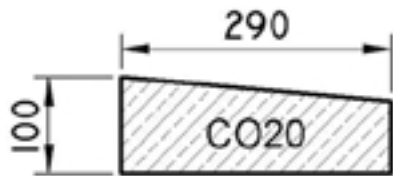
01342 811311

# Standard COPINGS

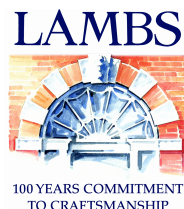
CO20 - 290 x 100 mm

CO21 - 280 x 80 mm

CO22 - 312 x 136 mm



**Port Limestone**  
**Port Regent Limestone**  
**Wealden Sussex Sandstone**



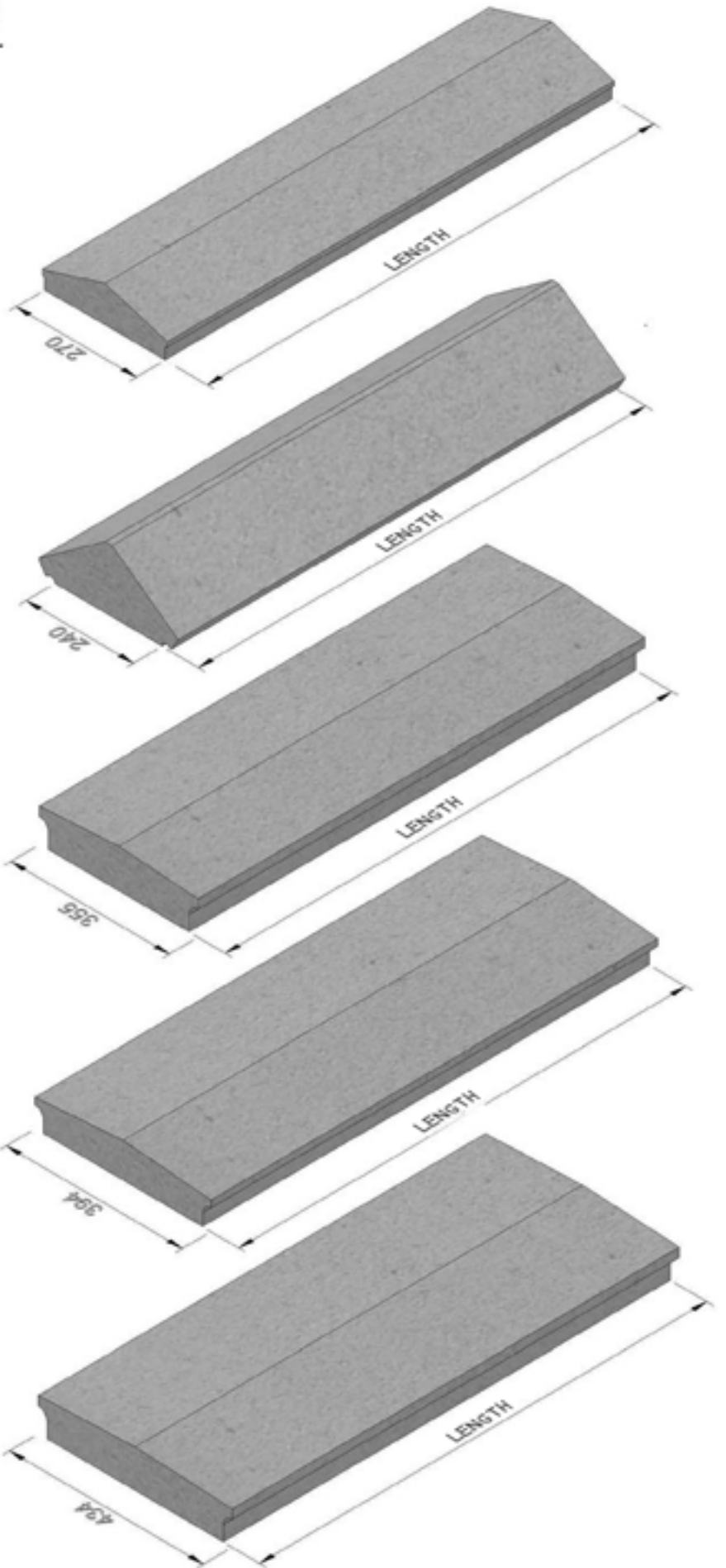
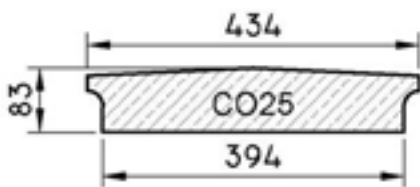
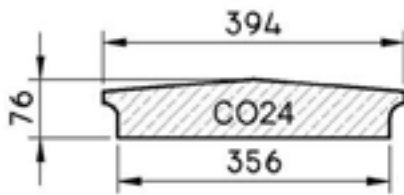
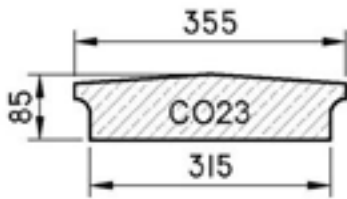
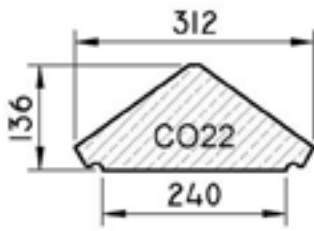
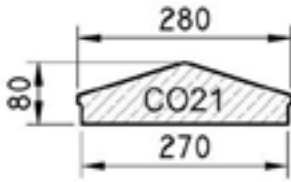
[www.lamsstone.com](http://www.lamsstone.com)

01342 811311

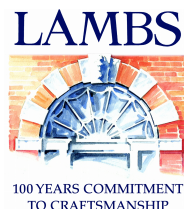
35

# Standard COPINGS

- CO21 - 280 x 80 mm
- CO22 - 312 x 136 mm
- CO23 - 355 x 85 mm
- CO24 - 394 x 76 mm
- CO25 - 434 x 83 mm



**Port Limestone**  
**Port Regent Limestone**  
**Wealden Sussex Sandstone**



[www.lamsstone.com](http://www.lamsstone.com)

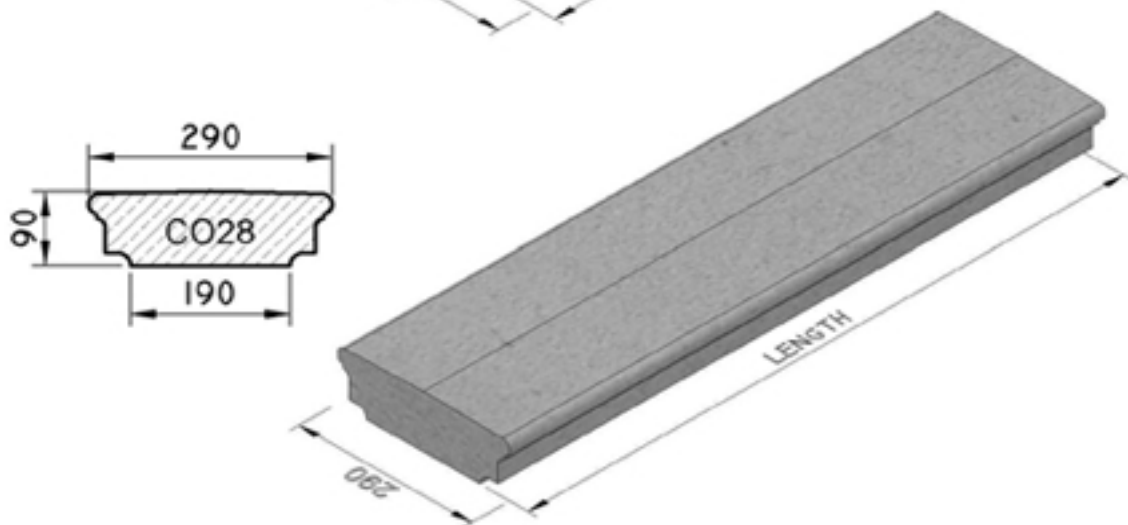
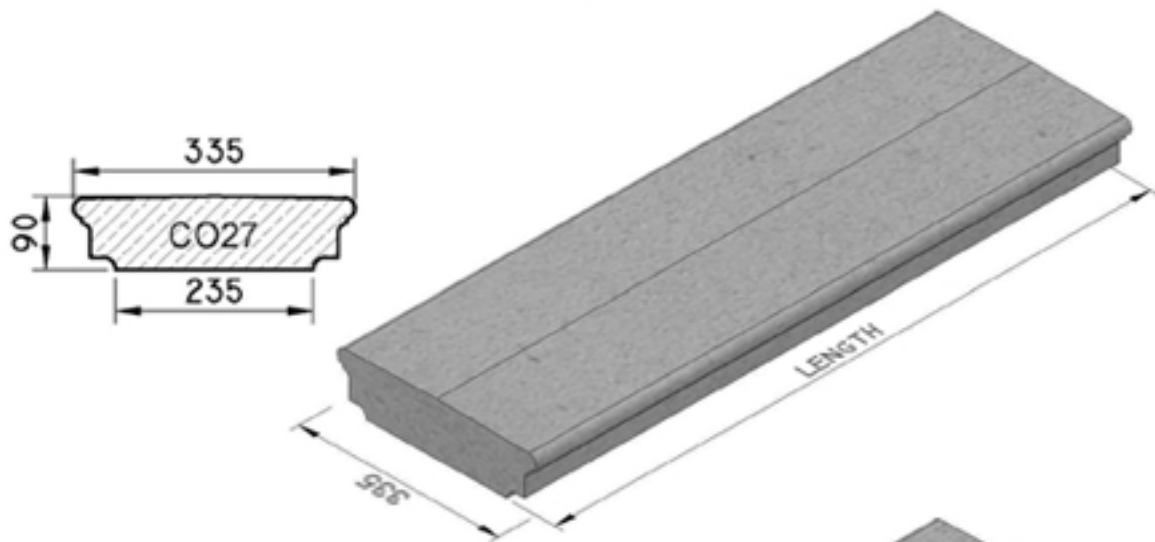
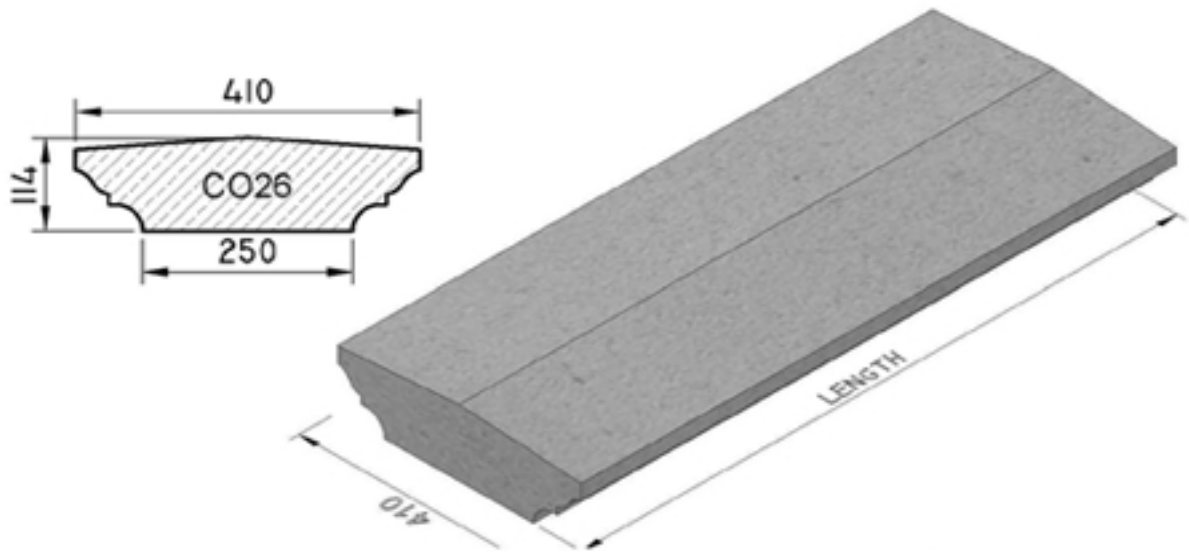
01342 811311

# Standard COPINGS

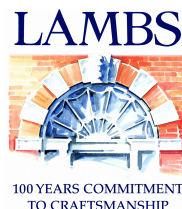
CO26 - 410 x 114 mm

CO27 - 335 x 90 mm

CO28 - 290 x 90 mm



Port Limestone  
Port Regent Limestone  
Wealden Sussex Sandstone



[www.lamsstone.com](http://www.lamsstone.com)

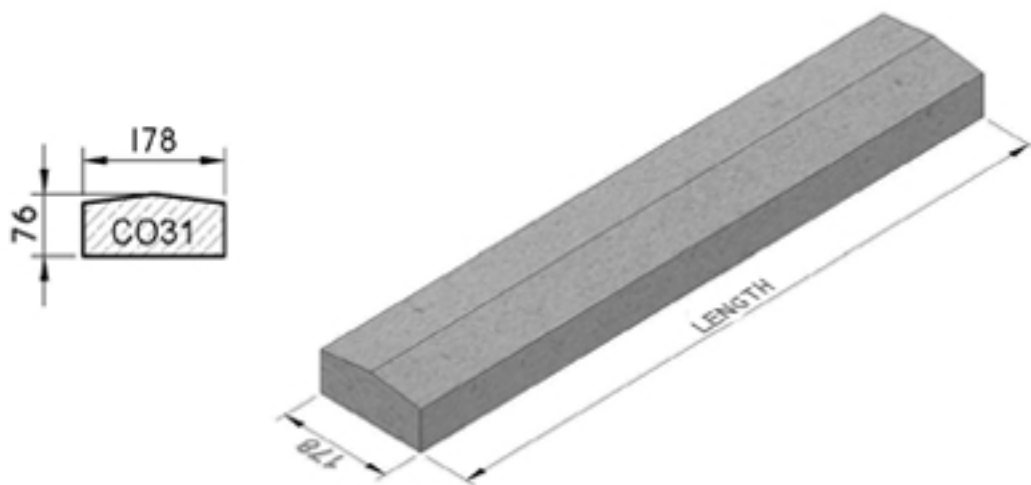
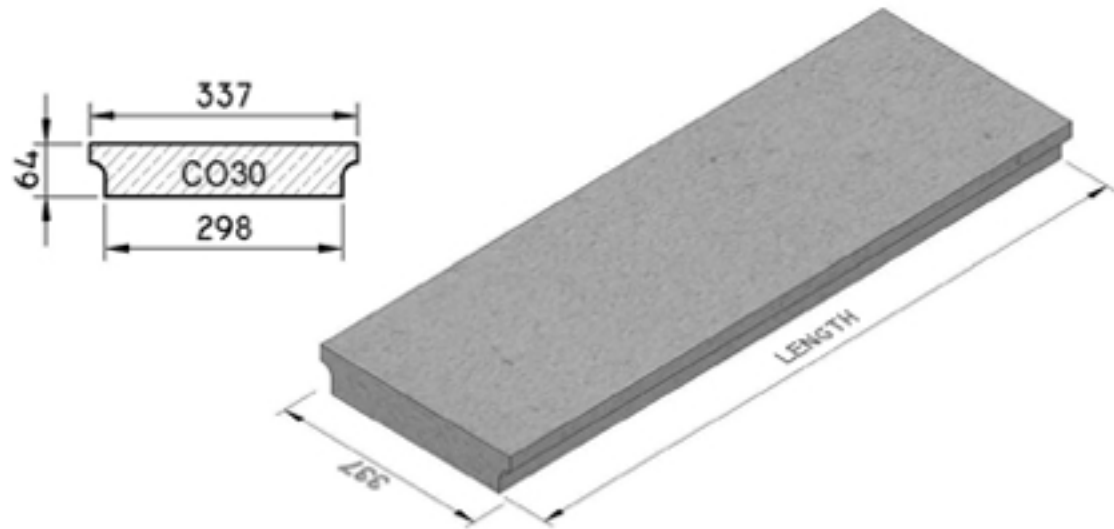
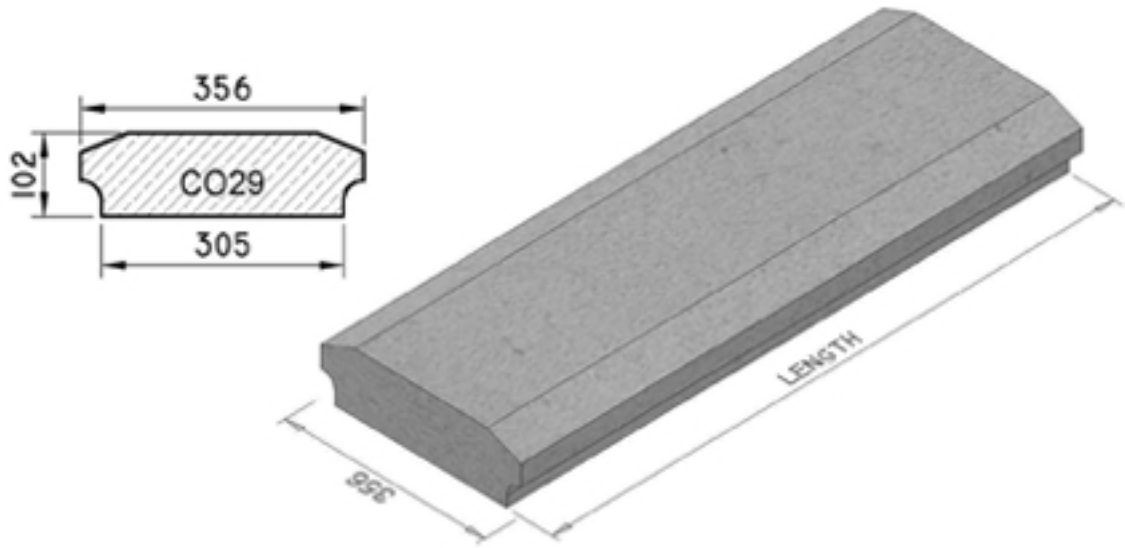
01342 811311

# Standard COPINGS

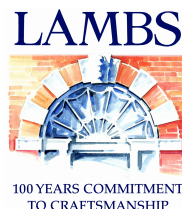
CO29 - 356 x 102 mm

CO30 - 337 x 64 mm

CO31 - 178 x 76 mm



**Port Limestone**  
**Port Regent Limestone**  
**Wealden Sussex Sandstone**



[www.lamsstone.com](http://www.lamsstone.com)

**01342 811311**

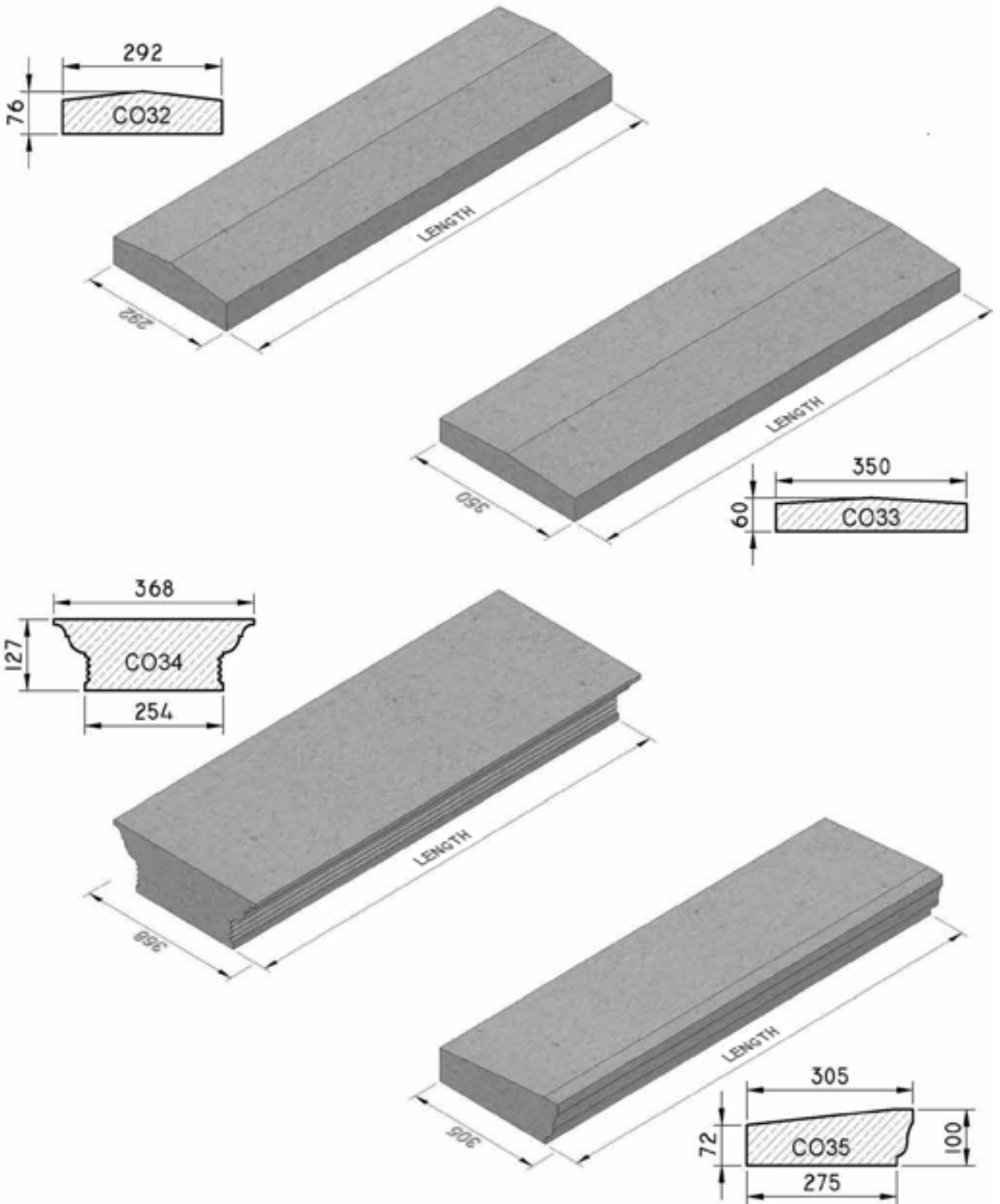
# Standard COPINGS

CO32 - 292 x 76 mm

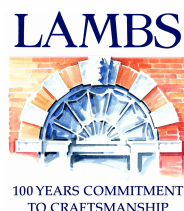
CO33 - 350 x 60 mm

CO34 - 368 x 127 mm

CO35 - 305 x 100 mm



**Port Limestone**  
**Port Regent Limestone**  
**Wealden Sussex Sandstone**



[www.lamsstone.com](http://www.lamsstone.com)

01342 811311

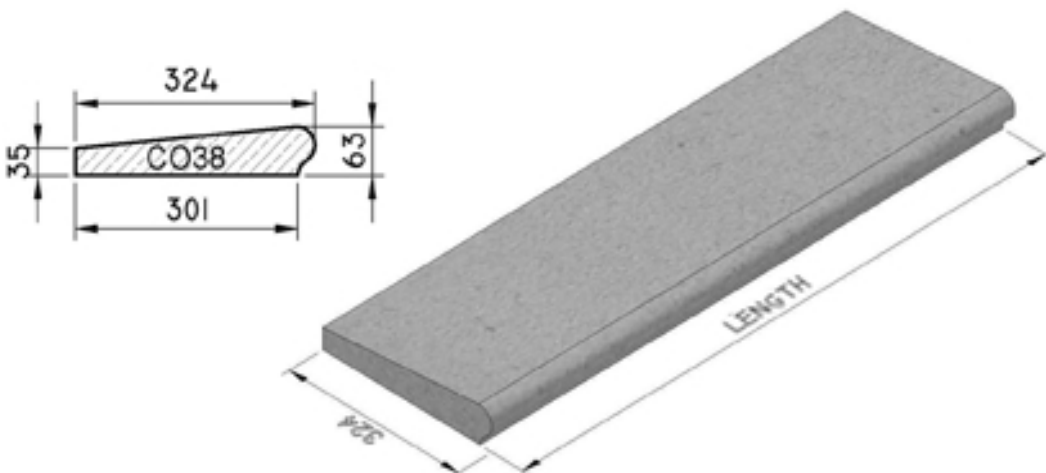
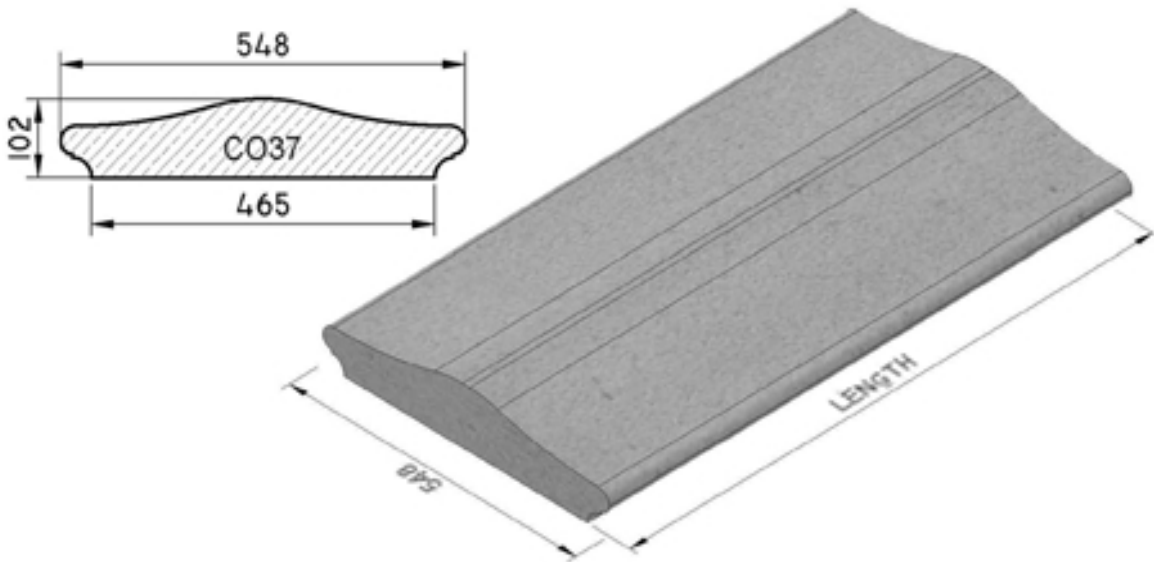
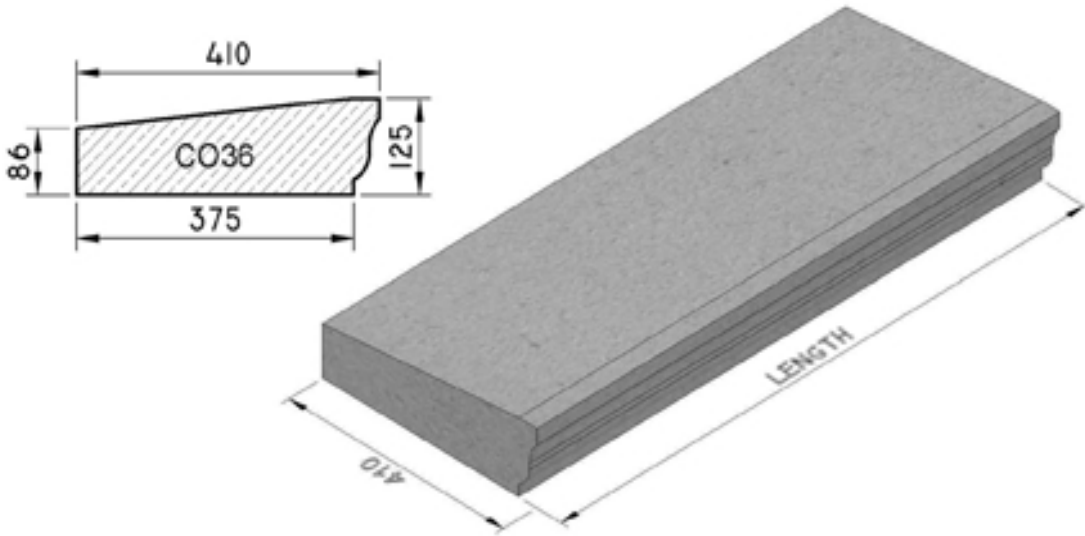
39

# Standard COPINGS

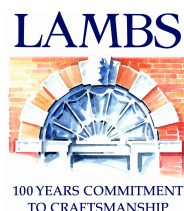
CO36 - 410 x 125 mm

CO37 - 548 x 102 mm

CO38 - 324 x 63 mm



**Port Limestone**  
**Port Regent Limestone**  
**Wealden Sussex Sandstone**



[www.lamsstone.com](http://www.lamsstone.com)

01342 811311